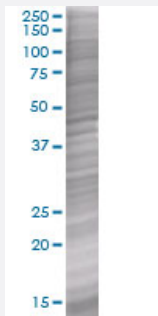


RABL2B 293T Cell Transient Overexpression Lysate(Denatured)

Catalog # H00011158-T01

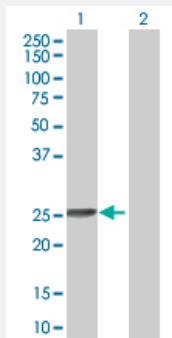
Size 100 uL

Applications



SDS-PAGE Gel

RABL2B transfected lysate



Western Blot

Lane 1: RABL2B transfected lysate (26.2 KDa).

Lane 2: Non-transfected lysate.

Specification

Transfected Cell Line 293T

Plasmid pCMV-RABL2B full-length

Host Human

Theoretical MW (kDa) 26.2

Quality Control Testing Transient overexpression cell lysate was tested with Anti-RABL2B antibody ([H00011158-B01](#)) by Western Blots.
 SDS-PAGE Gel
 RABL2B transfected lysate
 Western Blot
 Lane 1: RABL2B transfected lysate (26.2 KDa).
 Lane 2: Non-transfected lysate.

Storage Buffer	1X Sample Buffer (50 mM Tris-HCl, 2% SDS, 10% glycerol, 300 mM 2-mercaptoethanol, 0.01% Bromophenol blue)
Storage Instruction	Store at -80°C. Aliquot to avoid repeated freezing and thawing.

Applications

- Western Blot

Gene Info — RABL2B

Entrez GeneID	11158
GeneBank Accession#	NM_001003789
Protein Accession#	NP_001003789
Gene Name	RABL2B
Gene Alias	FLJ93981, FLJ98216
Gene Description	RAB, member of RAS oncogene family-like 2B
Omim ID	605413
Gene Ontology	Hyperlink
Gene Summary	The RABL2B protein is a member of the RAB gene family which belongs to the RAS GTPase superfamily. RABL2B is located within a subtelomeric region of 22q13.3. Multiple alternatively spliced transcript variants encoding several different isoforms have been found for this gene. [provided by RefSeq]
Other Designations	OTTHUMP00000196480 OTTHUMP00000196485 RAB-like protein 2B