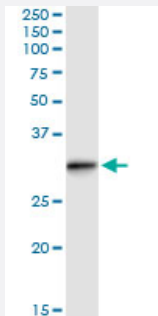


RABL2B (Human) IP-WB Antibody Pair

Catalog # H00011158-PW1

Size 1 Set

Applications



Immunoprecipitation of RABL2B transfected lysate using rabbit polyclonal anti-RABL2B and Protein A Magnetic Bead ([U0007](#)), and immunoblotted with mouse polyclonal anti-RABL2B.

Specification

Product Description	This IP-WB antibody pair set comes with one antibody for immunoprecipitation and another to detect the precipitated protein in western blot.
Reactivity	Human
Quality Control Testing	Immunoprecipitation-Western Blot (IP-WB) Immunoprecipitation of RABL2B transfected lysate using rabbit polyclonal anti-RABL2B and Protein A Magnetic Bead (U0007), and immunoblotted with mouse polyclonal anti-RABL2B.
Supplied Product	Antibody pair set content: 1. Antibody pair for IP: rabbit polyclonal anti-RABL2B (300 ul) 2. Antibody pair for WB: mouse polyclonal anti-RABL2B (50 ul)
Storage Instruction	Store reagents of the antibody pair set at -20°C or lower. Please aliquot to avoid repeated freeze thaw cycle. Reagents should be returned to -20°C storage immediately after use.

Applications

- Immunoprecipitation-Western Blot

[Protocol Download](#)

Gene Info — RABL2B

Entrez GeneID	11158
Gene Name	RABL2B
Gene Alias	FLJ93981, FLJ98216
Gene Description	RAB, member of RAS oncogene family-like 2B
Omim ID	605413
Gene Ontology	Hyperlink
Gene Summary	The RABL2B protein is a member of the RAB gene family which belongs to the RAS GTPase superfamily. RABL2B is located within a subtelomeric region of 22q13.3. Multiple alternatively spliced transcript variants encoding several different isoforms have been found for this gene. [provided by RefSeq]
Other Designations	OTTHUMP00000196480 OTTHUMP00000196485 RAB-like protein 2B