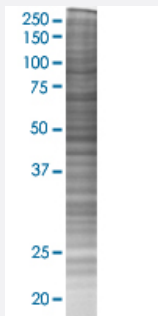


GLMN 293T Cell Transient Overexpression Lysate(Denatured)

Catalog # H00011146-T02

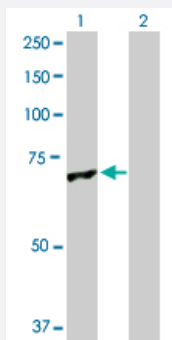
Size 100 uL

Applications



SDS-PAGE Gel

GLMN transfected lysate.



Western Blot

Lane 1: GLMN transfected lysate (68.20 KDa)

Lane 2: Non-transfected lysate.

Specification

| | |
|-------------------------------|-----------------------|
| Transfected Cell Line | 293T |
| Plasmid | pCMV-GLMN full-length |
| Host | Human |
| Theoretical MW (kDa) | 68.2 |
| Interspecies Antigen Sequence | Mouse (85); Rat (83) |

Quality Control Testing

Transient overexpression cell lysate was tested with Anti-GLMN antibody ([H00011146-D01P](#)) by Western Blots.
SDS-PAGE Gel
GLMN transfected lysate.
Western Blot
Lane 1: GLMN transfected lysate (68.20 KDa)
Lane 2: Non-transfected lysate.

Storage Buffer

1X Sample Buffer (50 mM Tris-HCl, 2% SDS, 10% glycerol, 300 mM 2-mercaptoethanol, 0.01% Bromophenol blue)

Storage Instruction

Store at -80°C. Aliquot to avoid repeated freezing and thawing.

Applications

- Western Blot

Gene Info — GLMN

Entrez GeneID[11146](#)**GeneBank Accession#**[NM_053274](#)**Protein Accession#**[NP_444504.1](#)**Gene Name**

GLMN

Gene Alias

FAP, FAP48, FAP68, FKBPAP, GLML, GVM, VMGLOM

Gene Description

glomulin, FKBP associated protein

Omim ID[138000 601749](#)**Gene Ontology**[Hyperlink](#)**Gene Summary**

This gene encodes a phosphorylated protein that is a member of a Skp1-Cullin-F-box-like complex. The protein is essential for normal development of the vasculature and mutations in this gene have been associated with glomuvenous malformations, also called glomangiomas. Alternatively spliced variants that encode different protein isoforms have been described but the full-length nature of only one has been determined. [provided by RefSeq]

Other Designations

FK506-binding protein-associated protein|OTTHUMP00000011939|glomulin|venous malformation with glomus cells