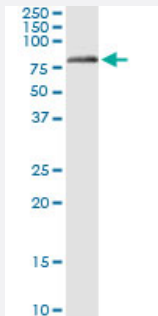


GLMN (Human) IP-WB Antibody Pair

Catalog # H00011146-PW2

Size 1 Set

Applications



Immunoprecipitation of GLMN transfected lysate using rabbit polyclonal anti-GLMN and Protein A Magnetic Bead ([U0007](#)), and immunoblotted with mouse purified polyclonal anti-GLMN.

Specification

Product Description	This IP-WB antibody pair set comes with one antibody for immunoprecipitation and another to detect the precipitated protein in western blot.
Reactivity	Human
Interspecies Antigen Sequence	Mouse (85); Rat (83)
Quality Control Testing	Immunoprecipitation-Western Blot (IP-WB) Immunoprecipitation of GLMN transfected lysate using rabbit polyclonal anti-GLMN and Protein A Magnetic Bead (U0007), and immunoblotted with mouse purified polyclonal anti-GLMN.
Supplied Product	Antibody pair set content: 1. Antibody pair for IP: rabbit polyclonal anti-GLMN (300 ul) 2. Antibody pair for WB: mouse purified polyclonal anti-GLMN (50 ug)
Storage Instruction	Store reagents of the antibody pair set at -20°C or lower. Please aliquot to avoid repeated freeze thaw cycle. Reagents should be returned to -20°C storage immediately after use.

Applications

- Immunoprecipitation-Western Blot

[Protocol Download](#)

Gene Info — GLMN

Entrez GeneID	11146
---------------	-----------------------

Gene Name	GLMN
-----------	------

Gene Alias	FAP , FAP48, FAP68, FKBPAP, GLML, GVM, VMGLOM
------------	---

Gene Description	glomulin, FKBP associated protein
------------------	-----------------------------------

Omim ID	138000 601749
---------	-------------------------------

Gene Ontology	Hyperlink
---------------	---------------------------

Gene Summary	This gene encodes a phosphorylated protein that is a member of a Skp1-Cullin-F-box-like complex. The protein is essential for normal development of the vasculature and mutations in this gene have been associated with glomuvenous malformations, also called glomangiomas. Alternatively spliced variants that encode different protein isoforms have been described but the full-length nature of only one has been determined. [provided by RefSeq]
--------------	--

Other Designations	FK506-binding protein-associated protein OTTHUMP00000011939 glomulin venous malformation with glomus cells
--------------------	--