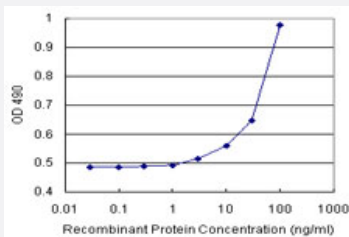


GLMN (Human) Matched Antibody Pair

Catalog # H00011146-AP21 Size 1 Set

Applications



Sandwich ELISA detection sensitivity ranging from 3 ng/ml to 100 ng/ml.

Specification

| | |
|--------------------------------------|--|
| Product Description | This antibody pair set comes with a matched antibody pair to detect and quantify the protein level of human GLMN. |
| Reactivity | Human |
| Interspecies Antigen Sequence | Mouse (85); Rat (83) |
| Quality Control Testing | Standard curve using recombinant protein (H00011146-P01) as an analyte. Sandwich ELISA detection sensitivity ranging from 3 ng/ml to 100 ng/ml. |
| Supplied Product | Antibody pair set content: 1. Capture antibody: rabbit MaxPab® affinity purified polyclonal anti-GLMN (100 ug) 2. Detection antibody: mouse purified polyclonal anti-GLMN (20 ug) *Reagents are sufficient for at least 1-2 x 96 well plates using recommended protocols. |
| Storage Instruction | Store reagents of the antibody pair set at -20°C or lower. Please aliquot to avoid repeated freeze thaw cycle. Reagents should be returned to -20°C storage immediately after use. |

Applications

- ELISA Pair (Recombinant protein)

[Protocol Download](#)

Gene Info — GLMN

Entrez GeneID [11146](#)

Gene Name GLMN

Gene Alias FAP, FAP48, FAP68, FKBPAP, GLML, GVM, VMGLOM

Gene Description glomulin, FKBP associated protein

Omim ID [138000 601749](#)

Gene Ontology [Hyperlink](#)

Gene Summary This gene encodes a phosphorylated protein that is a member of a Skp1-Cullin-F-box-like complex. The protein is essential for normal development of the vasculature and mutations in this gene have been associated with glomuvenous malformations, also called glomangiomas. Alternatively spliced variants that encode different protein isoforms have been described but the full-length nature of only one has been determined. [provided by RefSeq]

Other Designations FK506-binding protein-associated protein|OTTHUMP00000011939|glomulin|venous malformation with glomus cells