

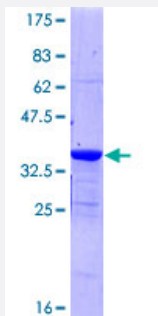
Full-Length

PKIG (Human) Recombinant Protein (P01)

Catalog # H00011142-P01

Size 25 ug, 10 ug

Applications



Specification

Product Description	Human PKIG full-length ORF (NP_008997.1, 1 a.a. - 76 a.a.) recombinant protein with GST-tag at N-terminal.
Sequence	MMEVESSYSDFISCDRTGRRNAVDPDIQGDSEAVSVRKLAGDMGELALEGAEGQVEGSAPDKEA GNQPQSSDGTSS
Host	Wheat Germ (in vitro)
Theoretical MW (kDa)	34.3
Interspecies Antigen Sequence	Mouse (90); Rat (90)
Preparation Method	in vitro wheat germ expression system
Purification	Glutathione Sepharose 4 Fast Flow
Quality Control Testing	12.5% SDS-PAGE Stained with Coomassie Blue.
Storage Buffer	50 mM Tris-HCl, 10 mM reduced Glutathione, pH=8.0 in the elution buffer.
Storage Instruction	Store at -80°C. Aliquot to avoid repeated freezing and thawing.
Note	Best use within three months from the date of receipt of this protein.

Applications

- Enzyme-linked Immunoabsorbent Assay
- Western Blot (Recombinant protein)
- Antibody Production
- Protein Array

Gene Info — PKIG

Entrez GeneID [11142](#)

GeneBank Accession# [NM_007066.3](#)

Protein Accession# [NP_008997.1](#)

Gene Name PKIG

Gene Alias MGC126458, MGC126459

Gene Description protein kinase (cAMP-dependent, catalytic) inhibitor gamma

Omim ID [604932](#)

Gene Ontology [Hyperlink](#)

Gene Summary The protein encoded by this gene is a member of the cAMP-dependent protein kinase (PKA) inhibitor family. Studies of a similar protein in mice suggest that this protein acts as a potent competitive PKA inhibitor, and is a predominant form of PKA inhibitors in various tissues. Three alternatively spliced transcript variants encoding the same protein have been reported. [provided by RefSeq]

Other Designations OTTHUMP00000031722|OTTHUMP00000031723|OTTHUMP00000063215|OTTHUMP00000063216|OTTHUMP00000063217|OTTHUMP00000063219|PKI-gamma|cAMP-dependent protein kinase inhibitor gamma

Disease

- [Cardiovascular Diseases](#)
- [Diabetes Mellitus](#)

- [Edema](#)