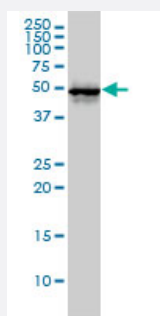


CDC37 monoclonal antibody (M01), clone 3C7

Catalog # H00011140-M01

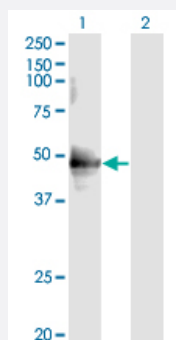
Size 100 ug

Applications



Western Blot (Cell lysate)

CDC37 monoclonal antibody (M01), clone 3C7. Western Blot analysis of CDC37 expression in HL-60 (Cat # L014V1).

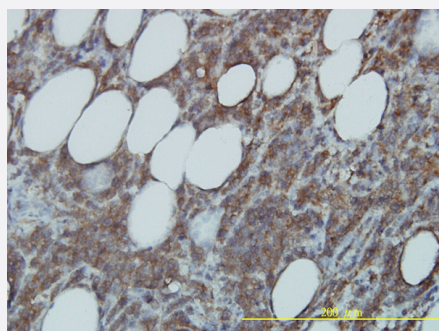


Western Blot (Transfected lysate)

Western Blot analysis of CDC37 expression in transfected 293T cell line by CDC37 monoclonal antibody (M01), clone 3C7.

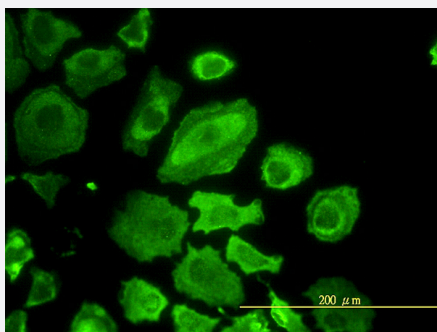
Lane 1: CDC37 transfected lysate(44.5 KDa).

Lane 2: Non-transfected lysate.



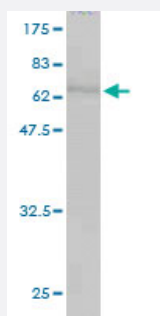
Immunohistochemistry (Formalin/PFA-fixed paraffin-embedded sections)

Immunoperoxidase of monoclonal antibody to CDC37 on formalin-fixed paraffin-embedded human malignant lymphoma, diffuse large B tissue. [antibody concentration 1 ug/ml]



Immunofluorescence

Immunofluorescence of monoclonal antibody to CDC37 on HeLa cell. [antibody concentration 10 ug/ml]



Western Blot detection against Immunogen (67.32 KDa) .

Specification

Product Description	Mouse monoclonal antibody raised against a full length recombinant CDC37.
Immunogen	CDC37 (AAH08793.1, 1 a.a. ~ 378 a.a) full-length recombinant protein with GST tag. MW of the GST tag alone is 26 KDa.
Sequence	MMDYSVWDHIEVSDDDETHPNIDTASLFRWRHQARVERMEQFQKEKEELDRGCRECKRKVAECQRKLKELEVAEGGKAELERLQAEAQQLRKEERSWEQKLEEMRKKEKSMPWNVDLTKDGFSSKSMVNTKPEKTEEDSEEVREQKHKTFFVEKYEQIKHFGMLRRWDDSQKYLSDNVHLVCEETANYLVWICIDLEVEEKCALMEQVAHQTMVMQFILELAKSLKVDPRACFRQFFTKIKIADRQYMEGFNDELEAFKERVGRAKLRIEKAMKEYEEEEERKKRLGPGGLDPVEVYESLPEELQKCFDVKDVQMLQDAISKMDPTDAKYHVQRCIDSLWVPNSKASEAKEGEEAGPGDPLLEAVPKTGDEKDVSV
Host	Mouse
Reactivity	Human
Interspecies Antigen Sequence	Mouse (95); Rat (92)
Isotype	IgG1 kappa
Quality Control Testing	Antibody Reactive Against Recombinant Protein. Western Blot detection against Immunogen (67.32 KDa) .
Storage Buffer	In 1x PBS, pH 7.4

Storage Instruction

Store at -20°C or lower. Aliquot to avoid repeated freezing and thawing.

Applications

- Western Blot (Cell lysate)

CDC37 monoclonal antibody (M01), clone 3C7. Western Blot analysis of CDC37 expression in HL-60 (Cat # L014V1).

[Protocol Download](#)

- Western Blot (Transfected lysate)

Western Blot analysis of CDC37 expression in transfected 293T cell line by CDC37 monoclonal antibody (M01), clone 3C7.

Lane 1: CDC37 transfected lysate(44.5 KDa).

Lane 2: Non-transfected lysate.

[Protocol Download](#)

- Western Blot (Recombinant protein)

[Protocol Download](#)

- Immunohistochemistry (Formalin/PFA-fixed paraffin-embedded sections)

Immunoperoxidase of monoclonal antibody to CDC37 on formalin-fixed paraffin-embedded human malignant lymphoma, diffuse large B tissue. [antibody concentration 1 ug/ml]

[Protocol Download](#)

- ELISA

- Immunofluorescence

Immunofluorescence of monoclonal antibody to CDC37 on HeLa cell. [antibody concentration 10 ug/ml]

Gene Info — CDC37

Entrez GeneID [11140](#)

GeneBank Accession# [BC008793](#)

Protein Accession# [AAH08793.1](#)

Gene Name CDC37

Gene Alias P50CDC37

Gene Description	cell division cycle 37 homolog (S. cerevisiae)
Omim ID	605065
Gene Ontology	Hyperlink
Gene Summary	The protein encoded by this gene is highly similar to Cdc 37, a cell division cycle control protein of <i>Saccharomyces cerevisiae</i> . This protein is a molecular chaperone with specific function in cell signal transduction. It has been shown to form complex with Hsp90 and a variety of protein kinases including CDK4, CDK6, SRC, RAF-1, MOK, as well as eIF2 alpha kinases. It is thought to play a critical role in directing Hsp90 to its target kinases. [provided by RefSeq]
Other Designations	CDC37 (cell division cycle 37, <i>S. cerevisiae</i> , homolog) CDC37 cell division cycle 37 homolog Hsp90 co-chaperone Cdc37 cell division cycle 37 protein

Disease

- [Adenocarcinoma](#)
- [Genetic Predisposition to Disease](#)
- [Pancreatic Neoplasms](#)