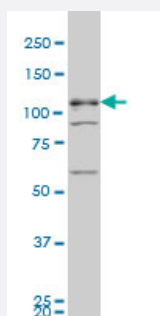


TBC1D8 monoclonal antibody (M02), clone 1A12

Catalog # H00011138-M02

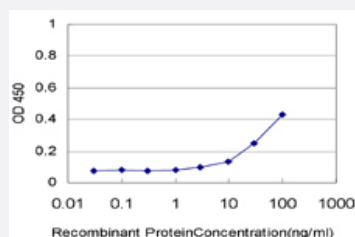
Size 100 ug

Applications



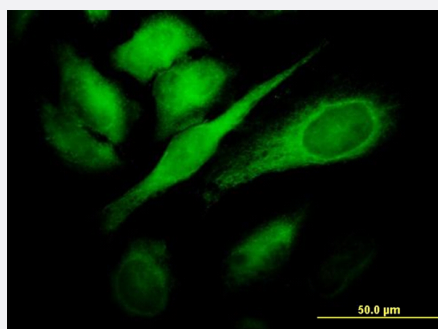
Western Blot (Cell lysate)

TBC1D8 monoclonal antibody (M02), clone 1A12 Western Blot analysis of TBC1D8 expression in K-562 (Cat # L009V1).



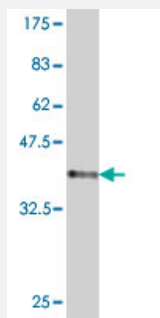
Sandwich ELISA (Recombinant protein)

Detection limit for recombinant GST tagged TBC1D8 is approximately 3ng/ml as a capture antibody.



Immunofluorescence

Immunofluorescence of monoclonal antibody to TBC1D8 on HeLa cell.
[antibody concentration 10 ug/ml]



Western Blot detection against Immunogen (37.84 KDa) .

Specification

Product Description	Mouse monoclonal antibody raised against a partial recombinant TBC1D8.
Immunogen	TBC1D8 (NP_008994, 1 a.a. ~ 110 a.a) partial recombinant protein with GST tag. MW of the GST tag alone is 26 KDa.
Sequence	MEQLADVTLRRLLDNEVFDLPDLQEPSQITKRDLEARAQNEFFRAFFRLPRKEKLHAVVDCSL WTPFSRCHTAGRMFASDSYICFASREDGCCKILPLREVVSIEKME
Host	Mouse
Reactivity	Human
Interspecies Antigen Sequence	Mouse (93); Rat (95)
Isotype	IgG2a Kappa
Quality Control Testing	Antibody Reactive Against Recombinant Protein. Western Blot detection against Immunogen (37.84 KDa) .
Storage Buffer	In 1x PBS, pH 7.4
Storage Instruction	Store at -20°C or lower. Aliquot to avoid repeated freezing and thawing.

Applications

- Western Blot (Cell lysate)

TBC1D8 monoclonal antibody (M02), clone 1A12 Western Blot analysis of TBC1D8 expression in K-562 (Cat # L009V1).

[Protocol Download](#)

- Western Blot (Recombinant protein)

[Protocol Download](#)

- Sandwich ELISA (Recombinant protein)

Detection limit for recombinant GST tagged TBC1D8 is approximately 3ng/ml as a capture antibody.

[Protocol Download](#)

- ELISA

- Immunofluorescence

Immunofluorescence of monoclonal antibody to TBC1D8 on HeLa cell. [antibody concentration 10 ug/ml]

Gene Info — TBC1D8

Entrez GeneID [11138](#)

GeneBank Accession# [NM_007063](#)

Protein Accession# [NP_008994](#)

Gene Name TBC1D8

Gene Alias AD3, HBLP1, VRP

Gene Description TBC1 domain family, member 8 (with GRAM domain)

Gene Ontology [Hyperlink](#)

Gene Summary O

Other Designations BUB2-like protein 1|TBC1 domain family, member 8|vascular Rab-GAP/TBC-containing

Disease

- [Genetic Predisposition to Disease](#)

- [Osteoporosis](#)