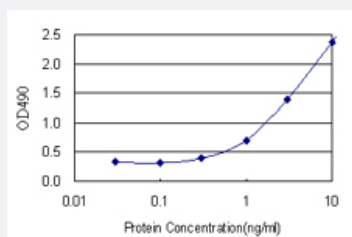


PWP1 (Human) Matched Antibody Pair

Catalog # H00011137-AP11 Size 1 Set

Applications



Sandwich ELISA detection sensitivity ranging from 0.3 ng/ml to 100 ng/ml.

Specification

Product Description	This antibody pair set comes with a matched antibody pair to detect and quantify the protein level of human PWP1.
Reactivity	Human
Interspecies Antigen Sequence	Mouse (89); Rat (89)
Quality Control Testing	Standard curve using recombinant protein (H00011137-P01) as an analyte. Sandwich ELISA detection sensitivity ranging from 0.3 ng/ml to 100 ng/ml.
Supplied Product	Antibody pair set content: 1. Capture antibody: rabbit MaxPab® affinity purified polyclonal anti-PWP1 (100 ug) 2. Detection antibody: mouse monoclonal anti-PWP1, IgG2b Kappa (20 ug) *Reagents are sufficient for at least 1-2 x 96 well plates using recommended protocols.
Storage Instruction	Store reagents of the antibody pair set at -20°C or lower. Please aliquot to avoid repeated freeze thaw cycle. Reagents should be returned to -20°C storage immediately after use.

Applications

- ELISA Pair (Recombinant protein)

[Protocol Download](#)

Gene Info — PWP1

Entrez GeneID	11137
Gene Name	PWP1
Gene Alias	IEF-SSP-9502
Gene Description	PWP1 homolog (S. cerevisiae)
Gene Ontology	Hyperlink
Other Designations	keratinocyte protein IEF SSP 9502 nuclear phosphoprotein similar to S. cerevisiae PWP1 periodic tryptophan protein 1