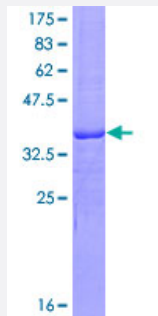


CD160 (Human) Recombinant Protein (Q01)

Catalog # H00011126-Q01

Size 25 ug, 10 ug

Applications



Specification

Product Description	Human CD160 partial ORF (AAH14465.1, 27 a.a. - 136 a.a.) recombinant protein with GST-tag at N-terminal.
Sequence	INITSSASQEGTRLNLICTVWHKKEEAEGFVVFLCKDRSGDCSPETSLKQLRLKRDPGIDGVGEIS SQLMFTISQVTPPLHSGTYQCCARSQKSGIRLQGHFFSILFTETG
Host	Wheat Germ (in vitro)
Theoretical MW (kDa)	37.84
Interspecies Antigen Sequence	Mouse (66)
Preparation Method	in vitro wheat germ expression system
Purification	Glutathione Sepharose 4 Fast Flow
Quality Control Testing	12.5% SDS-PAGE Stained with Coomassie Blue.
Storage Buffer	50 mM Tris-HCl, 10 mM reduced Glutathione, pH=8.0 in the elution buffer.
Storage Instruction	Store at -80°C. Aliquot to avoid repeated freezing and thawing.
Note	Best use within three months from the date of receipt of this protein.

Applications

- Enzyme-linked Immunoabsorbent Assay
- Western Blot (Recombinant protein)
- Antibody Production
- Protein Array

Gene Info — CD160

Entrez GeneID [11126](#)

GeneBank Accession# [NM_007053](#)

Protein Accession# [AAH14465.1](#)

Gene Name CD160

Gene Alias BY55, FLJ46513, NK1, NK28

Gene Description CD160 molecule

Omim ID [604463](#)

Gene Ontology [Hyperlink](#)

Gene Summary

CD160 is an 27 kDa glycoprotein which was initially identified with the monoclonal antibody BY55 . Its expression is tightly associated with peripheral blood NK cells and CD8 T lymphocytes with cytolytic effector activity. The cDNA sequence of CD160 predicts a cysteine-rich, glycosylphosphatidylinositol-anchored protein of 181 amino acids with a single Ig-like domain weakly homologous to KIR2DL4 molecule. CD160 is expressed at the cell surface as a tightly disulfide-linked multimer . RNA blot analysis revealed CD160 mRNAs of 1.5 and 1.6 kb whose expression was highly restricted to circulating NK and T cells, spleen and small intestine. Within NK cells CD160 is expressed by CD56dimCD16+ cells whereas among circulating T cells its expression is mainly restricted to TCRgd bearing cells and to TCRab+CD8brightCD95+CD56+CD28-CD27-cells. In tissues, CD160 is expressed on all intestinal intraepithelial lymphocytes. CD160 shows a broad specificity for binding to both classical and nonclassical MHC class I molecules. [provided by RefSeq]

Other Designations CD160 antigen|OTTHUMP00000015585|natural killer cell receptor, immunoglobulin superfamily member