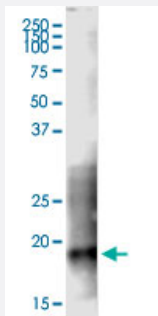


CD160 (Human) IP-WB Antibody Pair

Catalog # H00011126-PW2

Size 1 Set

Applications



Immunoprecipitation of CD160 transfected lysate using rabbit polyclonal anti-CD160 and Protein A Magnetic Bead ([U0007](#)), and immunoblotted with mouse purified polyclonal anti-CD160.

Specification

Product Description	This IP-WB antibody pair set comes with one antibody for immunoprecipitation and another to detect the precipitated protein in western blot.
Reactivity	Human
Interspecies Antigen Sequence	Mouse (66)
Quality Control Testing	Immunoprecipitation-Western Blot (IP-WB) Immunoprecipitation of CD160 transfected lysate using rabbit polyclonal anti-CD160 and Protein A Magnetic Bead (U0007), and immunoblotted with mouse purified polyclonal anti-CD160.
Supplied Product	Antibody pair set content: 1. Antibody pair for IP: rabbit polyclonal anti-CD160 (300 ul) 2. Antibody pair for WB: mouse purified polyclonal anti-CD160 (50 ug)
Storage Instruction	Store reagents of the antibody pair set at -20°C or lower. Please aliquot to avoid repeated freeze thaw cycle. Reagents should be returned to -20°C storage immediately after use.

Applications

- Immunoprecipitation-Western Blot

[Protocol Download](#)

Gene Info — CD160

Entrez GeneID [11126](#)

Gene Name CD160

Gene Alias BY55, FLJ46513, NK1, NK28

Gene Description CD160 molecule

Omim ID [604463](#)

Gene Ontology [Hyperlink](#)

Gene Summary CD160 is an 27 kDa glycoprotein which was initially identified with the monoclonal antibody BY55 . Its expression is tightly associated with peripheral blood NK cells and CD8 T lymphocytes with cytolytic effector activity. The cDNA sequence of CD160 predicts a cysteine-rich, glycosylphosphatidylinositol-anchored protein of 181 amino acids with a single Ig-like domain weakly homologous to KIR2DL4 molecule. CD160 is expressed at the cell surface as a tightly disulfide-linked multimer . RNA blot analysis revealed CD160 mRNAs of 1.5 and 1.6 kb whose expression was highly restricted to circulating NK and T cells, spleen and small intestine. Within NK cells CD160 is expressed by CD56dimCD16+ cells whereas among circulating T cells its expression is mainly restricted to TCRgd bearing cells and to TCRab+CD8brightCD95+CD56+CD28-CD27-cells. In tissues, CD160 is expressed on all intestinal intraepithelial lymphocytes. CD160 shows a broad specificity for binding to both classical and nonclassical MHC class I molecules. [provided by RefSeq]

Other Designations CD160 antigen|OTTHUMP00000015585|natural killer cell receptor, immunoglobulin superfamily member