

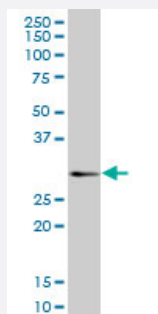
MaxPab®

# CD160 purified MaxPab mouse polyclonal antibody (B01P)

Catalog # H00011126-B01P

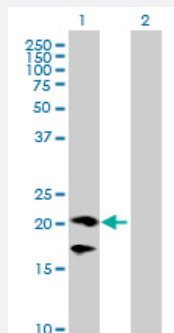
Size 50 ug

## Applications



### Western Blot (Tissue lysate)

CD160 MaxPab polyclonal antibody. Western Blot analysis of CD160 expression in human spleen.



### Western Blot (Transfected lysate)

Western Blot analysis of CD160 expression in transfected 293T cell line ([H00011126-T01](#)) by CD160 MaxPab polyclonal antibody.

Lane 1: CD160 transfected lysate(19.91 KDa).

Lane 2: Non-transfected lysate.

## Specification

Product Description	Mouse polyclonal antibody raised against a full-length human CD160 protein.
Immunogen	CD160 (AAH14465.1, 1 a.a. ~ 181 a.a) full-length human protein.
Sequence	MLLEPGRGCCALAILLAVIDIQSGGCINITSSASQEGTRLNLICTVWHKKEEAEGFVVFLCKDRSGD CSPETSLKQLRLKRDPGIDGVGEISSQLMFTISQVTPPLHSGTYQCCARSQKSGIRLQGHFFSILFTE TGNVTVTGLKQRQHLEFSHNEGTLSSGFLQEKVWVMLVTSLVVALQAL
Host	Mouse
Reactivity	Human



Interspecies Antigen Sequence	Mouse (66)
Quality Control Testing	Antibody reactive against mammalian transfected lysate.
Storage Buffer	In 1x PBS, pH 7.4
Storage Instruction	Store at -20°C or lower. Aliquot to avoid repeated freezing and thawing.

## Applications

- Western Blot (Tissue lysate)

CD160 MaxPab polyclonal antibody. Western Blot analysis of CD160 expression in human spleen.

[Protocol Download](#)

- Western Blot (Transfected lysate)

Western Blot analysis of CD160 expression in transfected 293T cell line ([H00011126-T01](#)) by CD160 MaxPab polyclonal antibody.

Lane 1: CD160 transfected lysate(19.91 KDa).

Lane 2: Non-transfected lysate.

[Protocol Download](#)

## Gene Info — CD160

Entrez GeneID	<a href="#">11126</a>
GeneBank Accession#	<a href="#">NM_007053</a>
Protein Accession#	<a href="#">AAH14465.1</a>
Gene Name	CD160
Gene Alias	BY55, FLJ46513, NK1, NK28
Gene Description	CD160 molecule
Omim ID	<a href="#">604463</a>
Gene Ontology	<a href="#">Hyperlink</a>



**Gene Summary**

CD160 is an 27 kDa glycoprotein which was initially identified with the monoclonal antibody BY55 . Its expression is tightly associated with peripheral blood NK cells and CD8 T lymphocytes with cytolytic effector activity. The cDNA sequence of CD160 predicts a cysteine-rich, glycosylphosphatidylinositol-anchored protein of 181 amino acids with a single Ig-like domain weakly homologous to KIR2DL4 molecule. CD160 is expressed at the cell surface as a tightly disulfide-linked multimer . RNA blot analysis revealed CD160 mRNAs of 1.5 and 1.6 kb whose expression was highly restricted to circulating NK and T cells, spleen and small intestine. Within NK cells CD160 is expressed by CD56dimCD16+ cells whereas among circulating T cells its expression is mainly restricted to TCRgd bearing cells and to TCRab+CD8brightCD95+CD56+CD28-CD27-cells. In tissues, CD160 is expressed on all intestinal intraepithelial lymphocytes. CD160 shows a broad specificity for binding to both classical and nonclassical MHC class I molecules. [provided by RefSeq]

**Other Designations**

CD160 antigen|OTTHUMP00000015585|natural killer cell receptor, immunoglobulin superfamily member