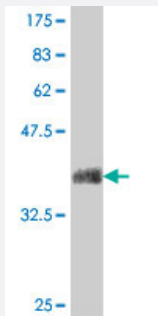


# CD160 polyclonal antibody (A01)

Catalog # H00011126-A01

Size 50 uL

## Applications



Western Blot detection against Immunogen (38.21 KDa) .

## Specification

<b>Product Description</b>	Mouse polyclonal antibody raised against a partial recombinant CD160.
<b>Immunogen</b>	CD160 (AAH14465.1, 27 a.a. ~ 136 a.a) partial recombinant protein with GST tag.
<b>Sequence</b>	INITSSASQEGTRLNLICTVWHKKEEAEGFVVFLCKDRSGDCSPETSLKQLRLKRDPGIDGVGEIS SQLMFTISQVTPLHSGTYQCCARSQKSGIRLQGHFFSILFTETG
<b>Host</b>	Mouse
<b>Reactivity</b>	Human
<b>Interspecies Antigen Sequence</b>	Mouse (66)
<b>Quality Control Testing</b>	Antibody Reactive Against Recombinant Protein. Western Blot detection against Immunogen (38.21 KDa) .
<b>Storage Buffer</b>	50 % glycerol
<b>Storage Instruction</b>	Store at -20°C or lower. Aliquot to avoid repeated freezing and thawing.

## Applications

- Western Blot (Recombinant protein)

[Protocol Download](#)

- ELISA

## Gene Info — CD160

Entrez GeneID [11126](#)

GeneBank Accession# [NM\\_007053](#)

Protein Accession# [AAH14465.1](#)

Gene Name CD160

Gene Alias BY55, FLJ46513, NK1, NK28

Gene Description CD160 molecule

Omim ID [604463](#)

Gene Ontology [Hyperlink](#)

**Gene Summary**

CD160 is an 27 kDa glycoprotein which was initially identified with the monoclonal antibody BY55 . Its expression is tightly associated with peripheral blood NK cells and CD8 T lymphocytes with cytolytic effector activity. The cDNA sequence of CD160 predicts a cysteine-rich, glycosylphosphatidylinositol-anchored protein of 181 amino acids with a single Ig-like domain weakly homologous to KIR2DL4 molecule. CD160 is expressed at the cell surface as a tightly disulfide-linked multimer . RNA blot analysis revealed CD160 mRNAs of 1.5 and 1.6 kb whose expression was highly restricted to circulating NK and T cells, spleen and small intestine. Within NK cells CD160 is expressed by CD56dimCD16+ cells whereas among circulating T cells its expression is mainly restricted to TCRgd bearing cells and to TCRab+CD8brightCD95+CD56+CD28-CD27-cells. In tissues, CD160 is expressed on all intestinal intraepithelial lymphocytes. CD160 shows a broad specificity for binding to both classical and nonclassical MHC class I molecules. [provided by RefSeq]

**Other Designations**

CD160 antigen|OTTHUMP00000015585|natural killer cell receptor, immunoglobulin superfamily member