

DNAPab

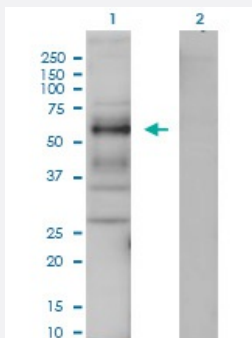
Hard-to-Find
Antibody

BTN2A1 DNAPab

Catalog # H00011120-W01P

Size 100 ug

Applications



Western Blot (Transfected lysate)

Western Blot analysis of BTN2A1 expression in transfected 293T cell line by BTN2A1 DNAPab polyclonal antibody.

Lane 1: BTN2A1 transfected lysate(45.32 KDa).

Lane 2: Non-transfected lysate.

Specification

Product Description

Rabbit polyclonal antibody raised against a partial-length human BTN2A1 DNA using DNAX™ Immune technology.

Technology

[DNAX™ Immune](#)

Immunogen

BTN2A1 (NP_510961.1, 29 a.a. ~ 248 a.a.) partial-length human DNA

Sequence

QFIVVGPTDPILATVGENTTLRCHLSPEKNAEDMEVRWFRSQFSPAVFVYKGGREERTEEQMEEY
RGRITFVSKDISRGSVALVIHNITAEQNGTYRCYFQEGRSYDEAILHLVVAGLGSKPLISMRGHEDG
GIRLECISRGWYPKPLTVWRDPYGGVAPALKEVSMPPADGLFMVTTAVIIRDKSVRNMSCSINNTL
LGQKKESVIFIPESFMPSVSPCA

Host

Rabbit

Reactivity

Human

Purification

Protein A

Quality Control Testing

Antibody reactive against mammalian transfected lysate.

Storage Buffer

In 1x PBS, pH 7.4

Storage Instruction

Store at -20°C or lower. Aliquot to avoid repeated freezing and thawing.

Applications

- Western Blot (Transfected lysate)

Western Blot analysis of BTN2A1 expression in transfected 293T cell line by BTN2A1 DNAxPab polyclonal antibody.

Lane 1: BTN2A1 transfected lysate(45.32 KDa).

Lane 2: Non-transfected lysate.

[Protocol Download](#)

- Immunofluorescence (Transfected cell)

- Flow Cytometry (Transfected cell)

Gene Info — BTN2A1

Entrez GeneID [11120](#)

GeneBank Accession# [NM_078476.1](#)

Protein Accession# [NP_510961.1](#)

Gene Name BTN2A1

Gene Alias BK14H9.1, BT2.1, BTF1, DJ3E1.1, FLJ36567

Gene Description butyrophilin, subfamily 2, member A1

Gene Ontology [Hyperlink](#)

Gene Summary This gene is a member of the BTN2 subfamily of genes, which encode proteins belonging to the butyrophilin protein family. The gene is located in a cluster on chromosome 6, consisting of seven genes belonging to the expanding B7/butyrophilin-like group, a subset of the immunoglobulin gene superfamily. The encoded protein is an integral plasma membrane B box protein involved in lipid, fatty-acid and sterol metabolism. [provided by RefSeq]

Other Designations butyrophilin BTF1