

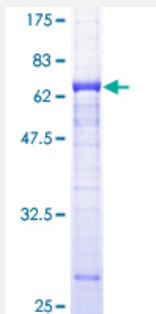
Full-Length

BTN2A1 (Human) Recombinant Protein (P01)

Catalog # H00011120-P01

Size 25 ug, 10 ug

Applications



Specification

Product Description

Human BTN2A1 full-length ORF (AAH16661, 1 a.a. - 334 a.a.) recombinant protein with GST-tag at N-terminal.

Sequence

MESAAALHFSRPASLLLLLLSLCALVSAQFMVGPDPILATVGENTTLRCHLSPEKNAEDMEVRW
FRSQFSPA VFVYKGGREERTEEQMEEYRGRTTFVSKDISRGSVALVIHNITAEQNGTYRCYFQEGRS
YDEAILHLVVAGLGSKPLISMRGHEDGGIRLECISRGWYPKPLTVWRDPYGGVAPALKEVSMPDA
DGLFMVTTAVIIRDKSVRNMSCSINNTLLGQKKESVIFIPESFMPSVSPCAVALPIIVILMPIAVCIYW
INKLQKEKKILSGEKEFERETREIALKELEKERVQKEEELQVKEKLQEELRWRTFLHAELQFFSN

Host

Wheat Germ (in vitro)

Theoretical MW (kDa)

62.48

Preparation Method

[in vitro wheat germ expression system](#)

Purification

Glutathione Sepharose 4 Fast Flow

Quality Control Testing

12.5% SDS-PAGE Stained with Coomassie Blue.

Storage Buffer

50 mM Tris-HCl, 10 mM reduced Glutathione, pH=8.0 in the elution buffer.

Storage Instruction

Store at -80°C. Aliquot to avoid repeated freezing and thawing.

Note

Best use within three months from the date of receipt of this protein.

Applications

- Enzyme-linked Immunoabsorbent Assay
- Western Blot (Recombinant protein)
- Antibody Production
- Protein Array

Gene Info — BTN2A1

Entrez GeneID [11120](#)

GeneBank Accession# [BC016661](#)

Protein Accession# [AAH16661](#)

Gene Name BTN2A1

Gene Alias BK14H9.1, BT2.1, BTF1, DJ3E1.1, FLJ36567

Gene Description butyrophilin, subfamily 2, member A1

Gene Ontology [Hyperlink](#)

Gene Summary This gene is a member of the BTN2 subfamily of genes, which encode proteins belonging to the butyrophilin protein family. The gene is located in a cluster on chromosome 6, consisting of seven genes belonging to the expanding B7/butyrophilin-like group, a subset of the immunoglobulin gene superfamily. The encoded protein is an integral plasma membrane B box protein involved in lipid, fatty-acid and sterol metabolism. [provided by RefSeq]

Other Designations butyrophilin BTF1