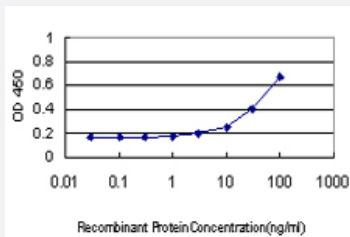


BTN2A1 monoclonal antibody (M01), clone 3A1

Catalog # H00011120-M01

Size 100 ug

Applications



Sandwich ELISA (Recombinant protein)

Detection limit for recombinant GST tagged BTN2A1 is approximately 1ng/ml as a capture antibody.

Specification

Product Description	Mouse monoclonal antibody raised against a full length recombinant BTN2A1.
Immunogen	BTN2A1 (AAH16661, 1 a.a. ~ 334 a.a) full-length recombinant protein with GST tag. MW of the GST tag alone is 26 KDa.
Sequence	MESAAALHFSRPASLLLLLLSLCALVSAQFVVGPTDPILATVGENTTLRCHLSPEKNAEDMEVRW FRSQFSPAVFVYKGGREERTEEQMEEYRGRTTFVSKDISRGSVALVIHNITAEQNGTYRCYFQEGRS YDEAILHLVVAGLGSKPLISMRGHEDGGIRLECISRGWYPKPLTVWRDPYGGVAPALKEVSMPPDA DGLFMVTTAVIIRDKSVRNMSCSINNTLLGQKKESVIFIPESFMPSVSPCAVALPIINVILMPIAVCIYW INKLQKEKKILSGEKEFERETREIALKELEKERVQKEEELQVKEKLQEELRWRRTFLHAELQFFSN
Host	Mouse
Reactivity	Human
Isotype	IgG2a Kappa
Quality Control Testing	Antibody Reactive Against Recombinant Protein.
Storage Buffer	In 1x PBS, pH 7.4
Storage Instruction	Store at -20°C or lower. Aliquot to avoid repeated freezing and thawing.

Applications

- Sandwich ELISA (Recombinant protein)

Detection limit for recombinant GST tagged BTN2A1 is approximately 1 ng/ml as a capture antibody.

[Protocol Download](#)

- ELISA

Gene Info — BTN2A1

Entrez GeneID	11120
---------------	-----------------------

GeneBank Accession#	BC016661
---------------------	--------------------------

Protein Accession#	AAH16661
--------------------	--------------------------

Gene Name	BTN2A1
-----------	--------

Gene Alias	BK14H9.1, BT2.1, BTF1, DJ3E1.1, FLJ36567
------------	--

Gene Description	butyrophilin, subfamily 2, member A1
------------------	--------------------------------------

Gene Ontology	Hyperlink
---------------	---------------------------

Gene Summary	This gene is a member of the BTN2 subfamily of genes, which encode proteins belonging to the butyrophilin protein family. The gene is located in a cluster on chromosome 6, consisting of seven genes belonging to the expanding B7/butyrophilin-like group, a subset of the immunoglobulin gene superfamily. The encoded protein is an integral plasma membrane B box protein involved in lipid, fatty-acid and sterol metabolism. [provided by RefSeq]
--------------	--

Other Designations	butyrophilin BTF1
--------------------	-------------------