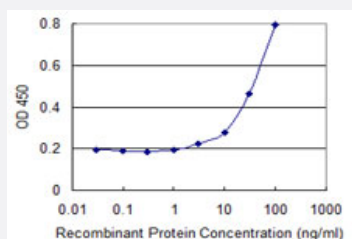


PRDM4 monoclonal antibody (M01), clone 3C4

Catalog # H00011108-M01

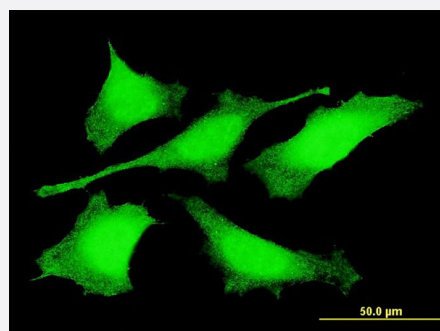
Size 100 ug

Applications



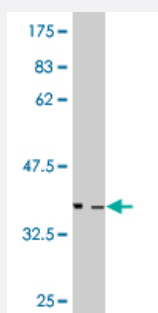
Sandwich ELISA (Recombinant protein)

Detection limit for recombinant GST tagged PRDM4 is 1 ng/ml as a capture antibody.



Immunofluorescence

Immunofluorescence of monoclonal antibody to PRDM4 on HeLa cell .
[antibody concentration 10 ug/ml]



Western Blot detection against Immunogen (36.74 KDa) .

Specification

Product Description

Mouse monoclonal antibody raised against a partial recombinant PRDM4.

Immunogen	PRDM4 (NP_036538, 476 a.a. ~ 575 a.a) partial recombinant protein with GST tag. MW of the GST tag alone is 26 KDa.
Sequence	IIITDENECSNMMFVRKARNREEQNLVAYPHDGKIFFCTSQDIPPENELLFYYSRDYAQQIGVPEH PDVHLCNCGKECNSYTEFKAHLTSHIHNLPTQG
Host	Mouse
Reactivity	Human
Interspecies Antigen Sequence	Mouse (93); Rat (93)
Isotype	IgG2a Kappa
Quality Control Testing	Antibody Reactive Against Recombinant Protein. Western Blot detection against Immunogen (36.74 KDa) .
Storage Buffer	In 1x PBS, pH 7.4
Storage Instruction	Store at -20°C or lower. Aliquot to avoid repeated freezing and thawing.

Applications

- Western Blot (Recombinant protein)

[Protocol Download](#)

- Sandwich ELISA (Recombinant protein)

Detection limit for recombinant GST tagged PRDM4 is 1 ng/ml as a capture antibody.

[Protocol Download](#)

- ELISA

- Immunofluorescence

Immunofluorescence of monoclonal antibody to PRDM4 on HeLa cell . [antibody concentration 10 ug/ml]

Gene Info — PRDM4

Entrez GeneID [11108](#)

GeneBank Accession# [NM_012406](#)

Protein Accession#	NP_036538
Gene Name	PRDM4
Gene Alias	MGC45046, PFM1
Gene Description	PR domain containing 4
Omim ID	605780
Gene Ontology	Hyperlink
Gene Summary	<p>The protein encoded by this gene is a transcription factor of the PR-domain protein family. It contains a PR-domain and multiple zinc finger motifs. Transcription factors of the PR-domain family are known to be involved in cell differentiation and tumorigenesis. An elevated expression level of this gene has been observed in PC12 cells treated with nerve growth factor, beta polypeptide (NGF). This gene is located in a chromosomal region that is thought to contain tumor suppressor genes. [provided by RefSeq]</p>
Other Designations	PR-domain zinc-finger protein PFM1

Pathway

- [Neurotrophin signaling pathway](#)

Disease

- [Tobacco Use Disorder](#)