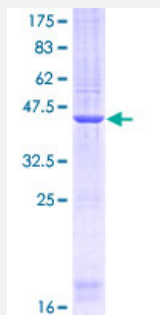


WDR5 (Human) Recombinant Protein (Q01)

Catalog # H00011091-Q01

Size 25 ug, 10 ug

Applications



Specification

Product Description	Human WDR5 partial ORF (NP_060058, 16 a.a. - 120 a.a.) recombinant protein with GST-tag at N-terminal.
Sequence	QPTPSSSATQSKPTPVKPNYALKFTLAGHTKAVSSVKFSPNGEWLASSADKLIKWGAYDGKFE KTISGHKLGISDVAWSSDSNLLVSASDDKTLKWDVSSGK
Host	Wheat Germ (in vitro)
Theoretical MW (kDa)	37.29
Preparation Method	in vitro wheat germ expression system
Purification	Glutathione Sepharose 4 Fast Flow
Quality Control Testing	12.5% SDS-PAGE Stained with Coomassie Blue.
Storage Buffer	50 mM Tris-HCl, 10 mM reduced Glutathione, pH=8.0 in the elution buffer.
Storage Instruction	Store at -80°C. Aliquot to avoid repeated freezing and thawing.
Note	Best use within three months from the date of receipt of this protein.

Applications

- Enzyme-linked Immunoabsorbent Assay
- Western Blot (Recombinant protein)
- Antibody Production
- Protein Array

Gene Info — WDR5

Entrez GeneID [11091](#)

GeneBank Accession# [NM_017588](#)

Protein Accession# [NP_060058](#)

Gene Name WDR5

Gene Alias BIG-3, SWD3

Gene Description WD repeat domain 5

Omim ID [609012](#)

Gene Ontology [Hyperlink](#)

Gene Summary This gene encodes a member of the WD repeat protein family. WD repeats are minimally conserved regions of approximately 40 amino acids typically bracketed by gly-his and trp-aspartate (GH-WD), which may facilitate formation of heterotrimeric or multiprotein complexes. Members of this family are involved in a variety of cellular processes, including cell cycle progression, signal transduction, apoptosis, and gene regulation. This protein contains 7 WD repeats. Alternatively spliced transcript variants encoding the same protein have been identified. [provided by RefSeq]

Other Designations BMP2-induced 3-kb gene protein|SWD3, Set1c WD40 repeat protein, homolog|WD-repeat protein 5