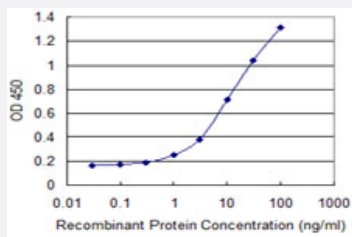


# WDR5 monoclonal antibody (M06), clone 1B1

Catalog # H00011091-M06

Size 100 ug

## Applications



### Sandwich ELISA (Recombinant protein)

Detection limit for recombinant GST tagged WDR5 is 0.3 ng/ml as a capture antibody.

## Specification

<b>Product Description</b>	Mouse monoclonal antibody raised against a partial recombinant WDR5.
<b>Immunogen</b>	WDR5 (NP_060058, 16 a.a. ~ 120 a.a) partial recombinant protein with GST tag. MW of the GST tag alone is 26 KDa.
<b>Sequence</b>	QTPSSSATQSKPTPVKPNYALKFTLAGHTKAVSSVKFSPNGEWLASSADKLIKIWGAYDGKFE KTISGHKLGISDVAWSSDSNLLVSASDDKTLKWDVSSGK
<b>Host</b>	Mouse
<b>Reactivity</b>	Human
<b>Isotype</b>	IgG2a Kappa
<b>Quality Control Testing</b>	Antibody Reactive Against Recombinant Protein.
<b>Storage Buffer</b>	In 1x PBS, pH 7.4
<b>Storage Instruction</b>	Store at -20°C or lower. Aliquot to avoid repeated freezing and thawing.

## Applications

- Sandwich ELISA (Recombinant protein)

Detection limit for recombinant GST tagged WDR5 is 0.3 ng/ml as a capture antibody.

[Protocol Download](#)

- ELISA

## Gene Info — WDR5

Entrez GeneID	<a href="#">11091</a>
---------------	-----------------------

GeneBank Accession#	<a href="#">NM_017588</a>
---------------------	---------------------------

Protein Accession#	<a href="#">NP_060058</a>
--------------------	---------------------------

Gene Name	WDR5
-----------	------

Gene Alias	BIG-3, SWD3
------------	-------------

Gene Description	WD repeat domain 5
------------------	--------------------

Omim ID	<a href="#">609012</a>
---------	------------------------

Gene Ontology	<a href="#">Hyperlink</a>
---------------	---------------------------

Gene Summary	This gene encodes a member of the WD repeat protein family. WD repeats are minimally conserved regions of approximately 40 amino acids typically bracketed by gly-his and trp-aspartic acid (GH-WD), which may facilitate formation of heterotrimeric or multiprotein complexes. Members of this family are involved in a variety of cellular processes, including cell cycle progression, signal transduction, apoptosis, and gene regulation. This protein contains 7 WD repeats. Alternatively spliced transcript variants encoding the same protein have been identified. [provided by RefSeq]
--------------	--

Other Designations	BMP2-induced 3-kb gene protein SWD3, Set1c WD40 repeat protein, homolog WD-repeat protein 5
--------------------	---