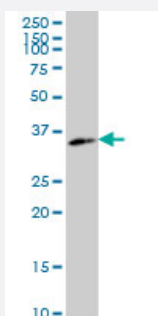


WDR5 monoclonal antibody (M01A), clone 2C2

Catalog # H00011091-M01A

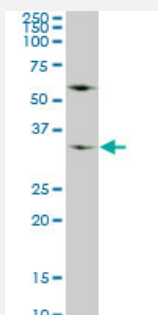
Size 200 uL

Applications



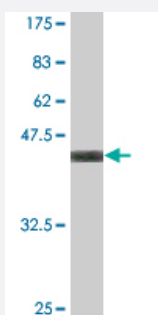
Western Blot (Cell lysate)

WDR5 monoclonal antibody (M01A), clone 2C2. Western Blot analysis of WDR5 expression in Hs 181.Tes.



Western Blot (Cell lysate)

WDR5 monoclonal antibody (M01A), clone 2C2. Western Blot analysis of WDR5 expression in A-549 (Cat # L025V1).



Western Blot detection against Immunogen (37.29 KDa) .

Specification

Product Description

Mouse monoclonal antibody raised against a partial recombinant WDR5.

Immunogen	WDR5 (NP_060058, 16 a.a. ~ 120 a.a) partial recombinant protein with GST tag. MW of the GST tag alone is 26 KDa.
Sequence	QPTPSSSATQSKPTPVKPNYALKFTLAGHTKAVSSVKFSPNGEWLASSSADKLIKWGAYDGKFEKTISGHKLGISDVAWSSDSNLLVSASDDKTLKWDVSSGK
Host	Mouse
Reactivity	Human
Isotype	IgG2b Kappa
Quality Control Testing	Antibody Reactive Against Recombinant Protein. Western Blot detection against Immunogen (37.29 KDa) .
Storage Buffer	In ascites fluid
Storage Instruction	Store at -20°C or lower. Aliquot to avoid repeated freezing and thawing.

Applications

- Western Blot (Cell lysate)

WDR5 monoclonal antibody (M01A), clone 2C2. Western Blot analysis of WDR5 expression in Hs 181.Tes.

[Protocol Download](#)

- Western Blot (Cell lysate)

WDR5 monoclonal antibody (M01A), clone 2C2. Western Blot analysis of WDR5 expression in A-549 (Cat # L025V1).

[Protocol Download](#)

- Western Blot (Recombinant protein)

[Protocol Download](#)

- ELISA

Gene Info — WDR5

Entrez GeneID	11091
GeneBank Accession#	NM_017588
Protein Accession#	NP_060058

Gene Name	WDR5
Gene Alias	BIG-3, SWD3
Gene Description	WD repeat domain 5
Omim ID	609012
Gene Ontology	Hyperlink
Gene Summary	<p>This gene encodes a member of the WD repeat protein family. WD repeats are minimally conserved regions of approximately 40 amino acids typically bracketed by gly-his and trp-aspartate (GH-WD), which may facilitate formation of heterotrimeric or multiprotein complexes. Members of this family are involved in a variety of cellular processes, including cell cycle progression, signal transduction, apoptosis, and gene regulation. This protein contains 7 WD repeats. Alternatively spliced transcript variants encoding the same protein have been identified. [provided by RefSeq]</p>
Other Designations	BMP2-induced 3-kb gene protein SWD3, Set1c WD40 repeat protein, homolog WD-repeat protein 5