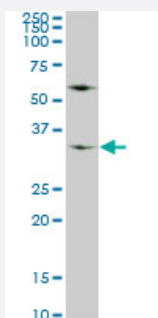


WDR5 monoclonal antibody (M01), clone 2C2

Catalog # H00011091-M01

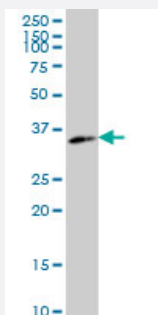
Size 100 ug

Applications



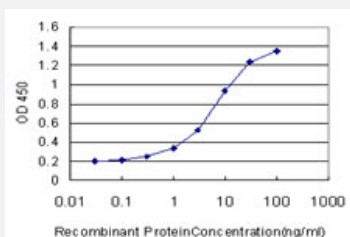
Western Blot (Cell lysate)

WDR5 monoclonal antibody (M01), clone 2C2. Western Blot analysis of WDR5 expression in A-549 (Cat # L025V1).



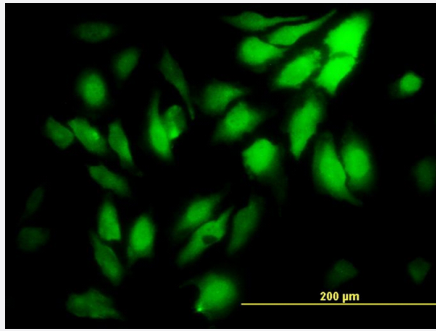
Western Blot (Cell lysate)

WDR5 monoclonal antibody (M01), clone 2C2. Western Blot analysis of WDR5 expression in Hs 181.Tes.



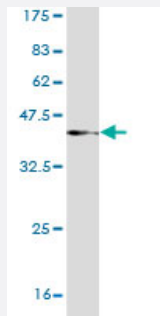
Sandwich ELISA (Recombinant protein)

Detection limit for recombinant GST tagged WDR5 is approximately 0.3ng/ml as a capture antibody.



Immunofluorescence

Immunofluorescence of monoclonal antibody to WDR5 on HeLa cell. [antibody concentration 10 ug/ml]



Western Blot detection against Immunogen (37.29 KDa) .

Specification

Product Description	Mouse monoclonal antibody raised against a partial recombinant WDR5.
Immunogen	WDR5 (NP_060058, 16 a.a. ~ 120 a.a) partial recombinant protein with GST tag. MW of the GST tag alone is 26 KDa.
Sequence	QPTPSSSATQSKPTPVKPNYALKFTLAGHTKAVSSVKFSPNGEWLASSADKLIKWGAYDGKFE KTISGHKLGISDVAWSSDSNLLVSASDDKTLKWDVSSGK
Host	Mouse
Reactivity	Human
Isotype	IgG2b Kappa
Quality Control Testing	Antibody Reactive Against Recombinant Protein. Western Blot detection against Immunogen (37.29 KDa) .
Storage Buffer	In 1x PBS, pH 7.4
Storage Instruction	Store at -20°C or lower. Aliquot to avoid repeated freezing and thawing.

Applications

- Western Blot (Cell lysate)

WDR5 monoclonal antibody (M01), clone 2C2. Western Blot analysis of WDR5 expression in A-549 (Cat # L025V1).

[Protocol Download](#)

- Western Blot (Cell lysate)

WDR5 monoclonal antibody (M01), clone 2C2. Western Blot analysis of WDR5 expression in Hs 181.Tes.

[Protocol Download](#)

- Western Blot (Recombinant protein)

[Protocol Download](#)

- Sandwich ELISA (Recombinant protein)

Detection limit for recombinant GST tagged WDR5 is approximately 0.3ng/ml as a capture antibody.

[Protocol Download](#)

- ELISA

- Immunofluorescence

Immunofluorescence of monoclonal antibody to WDR5 on HeLa cell. [antibody concentration 10 ug/ml]

Gene Info — WDR5

Entrez GeneID	11091
---------------	-----------------------

GeneBank Accession#	NM_017588
---------------------	---------------------------

Protein Accession#	NP_060058
--------------------	---------------------------

Gene Name	WDR5
-----------	------

Gene Alias	BIG-3, SWD3
------------	-------------

Gene Description	WD repeat domain 5
------------------	--------------------

Omim ID	609012
---------	------------------------

Gene Ontology	Hyperlink
---------------	---------------------------

Gene Summary

This gene encodes a member of the WD repeat protein family. WD repeats are minimally conserved regions of approximately 40 amino acids typically bracketed by gly-his and trp-aspartate (GH-WD), which may facilitate formation of heterotrimeric or multiprotein complexes. Members of this family are involved in a variety of cellular processes, including cell cycle progression, signal transduction, apoptosis, and gene regulation. This protein contains 7 WD repeats. Alternatively spliced transcript variants encoding the same protein have been identified. [provided by RefSeq]

Other Designations

BMP2-induced 3-kb gene protein|SWD3, Set1c WD40 repeat protein, homolog|WD-repeat protein 5