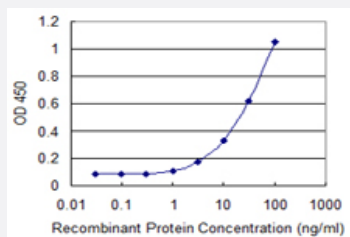


ADAM29 monoclonal antibody (M09), clone 3A6

Catalog # H00011086-M09

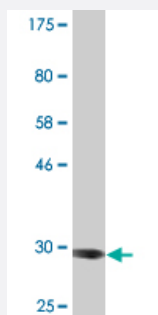
Size 100 ug

Applications



Sandwich ELISA (Recombinant protein)

Detection limit for recombinant GST tagged ADAM29 is 0.3 ng/ml as a capture antibody.



Western Blot detection against Immunogen (32.34 KDa) .

Specification

Product Description	Mouse monoclonal antibody raised against a partial recombinant ADAM29.
Immunogen	ADAM29 (NP_055084, 339 a.a. ~ 398 a.a) partial recombinant protein with GST tag. MW of the GST tag alone is 26 KDa.
Sequence	GMNHDEDTCRCSQPRCIMHEGNPPITKFSNCSYGDFWEYTVERTKCLLETVHTKDIFNVK
Host	Mouse
Reactivity	Human
Interspecies Antigen Sequence	Mouse (58)

Isotype	IgG1 Kappa
Quality Control Testing	Antibody Reactive Against Recombinant Protein. Western Blot detection against Immunogen (32.34 KDa) .
Storage Buffer	In 1x PBS, pH 7.4
Storage Instruction	Store at -20°C or lower. Aliquot to avoid repeated freezing and thawing.

Applications

- Western Blot (Recombinant protein)

[Protocol Download](#)

- Sandwich ELISA (Recombinant protein)

Detection limit for recombinant GST tagged ADAM29 is 0.3 ng/ml as a capture antibody.

[Protocol Download](#)

- ELISA

Gene Info — ADAM29

Entrez GeneID	11086
GeneBank Accession#	NM_014269
Protein Accession#	NP_055084
Gene Name	ADAM29
Gene Alias	svph1
Gene Description	ADAM metallopeptidase domain 29
Omim ID	604778
Gene Ontology	Hyperlink

Gene Summary

This gene encodes a member of the ADAM (a disintegrin and metalloprotease domain) family. Members of this family are membrane-anchored proteins structurally related to snake venom disintegrins, and have been implicated in a variety of biological processes involving cell-cell and cell-matrix interactions, including fertilization, muscle development, and neurogenesis. The protein encoded by this gene is highly expressed in testis and may be involved in human spermatogenesis. Alternative splicing results in multiple transcript variants that encode the same protein. [provided by RefSeq]

Other Designations

a disintegrin and metalloproteinase domain 29

Publication Reference

- [Germ cell-specific proteins AKAP4 and ASPX facilitate identification of rare spermatozoa in non-obstructive azoospermia.](#)

Junyan Zhang, Mirzo Kanoatov, Keith Jarvi, Andree Gauthier-Fisher, Sergey I Moskovtsev, Clifford Librach, Andrei P Drabovich.
Molecular & Cellular proteomics: MCP 2023 Apr; 22(6):100556.

Application: IF, Human, Human spermatozoa

- [ADAM29 Expression in Human Breast Cancer and its Effects on Breast Cancer Cells In Vitro.](#)

Zhao M, Jia W, Jiang WG, Wang P, DU G, Cheng S, Song M.
Anticancer Research 2016 Mar; 36(3):1251.

Application: IHC-Fr, Human, Human breast cancer