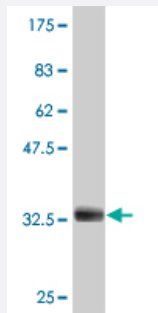


ADAM29 polyclonal antibody (A01)

Catalog # H00011086-A01

Size 50 uL

Applications



Western Blot detection against Immunogen (32.71 KDa) .

Specification

Product Description	Mouse polyclonal antibody raised against a partial recombinant ADAM29.
Immunogen	ADAM29 (NP_055084, 339 a.a. ~ 398 a.a) partial recombinant protein with GST tag.
Sequence	GMNHDEDTCRCSQPRCIMHEGNPPITKFSNCSYGDFWEYTVERTKCLLETVHTKDIFNVK
Host	Mouse
Reactivity	Human
Interspecies Antigen Sequence	Mouse (58)
Quality Control Testing	Antibody Reactive Against Recombinant Protein. Western Blot detection against Immunogen (32.71 KDa) .
Storage Buffer	50 % glycerol
Storage Instruction	Store at -20°C or lower. Aliquot to avoid repeated freezing and thawing.

Applications

- Western Blot (Recombinant protein)

[Protocol Download](#)

- ELISA

Gene Info — ADAM29

Entrez GeneID [11086](#)

GeneBank Accession# [NM_014269](#)

Protein Accession# [NP_055084](#)

Gene Name ADAM29

Gene Alias svph1

Gene Description ADAM metallopeptidase domain 29

Omim ID [604778](#)

Gene Ontology [Hyperlink](#)

Gene Summary This gene encodes a member of the ADAM (a disintegrin and metalloprotease domain) family. Members of this family are membrane-anchored proteins structurally related to snake venom disintegrins, and have been implicated in a variety of biological processes involving cell-cell and cell-matrix interactions, including fertilization, muscle development, and neurogenesis. The protein encoded by this gene is highly expressed in testis and may be involved in human spermatogenesis. Alternative splicing results in multiple transcript variants that encode the same protein. [provided by RefSeq]

Other Designations a disintegrin and metalloproteinase domain 29

Publication Reference

- [Clinical significance of ADAM29 promoting the invasion and growth of gastric cancer cells in vitro.](#)

Chen H, Wang S.

Oncology Letters 2018 Aug; 16(2):1483.

Application: IHC-P, WB-Tr, Human, AGS, MGC803 cells, Human gastric tissue samples