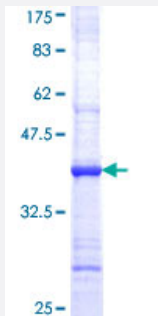


ADAM30 (Human) Recombinant Protein (Q01)

Catalog # H00011085-Q01

Size 25 ug, 10 ug

Applications



Specification

Product Description	Human ADAM30 partial ORF (NP_068566, 199 a.a. - 298 a.a.) recombinant protein with GST-tag at N-terminal.
Sequence	YKHPKYLELILLFDQSRVRFVNNLSQVIHDAILLTGIMDTYFQDVRMRIHLKALEVWTFDNKIRVGYP ELAEVLGRFVIYKKSVLNARLSSDWAHLYLQ
Host	Wheat Germ (in vitro)
Theoretical MW (kDa)	36.74
Interspecies Antigen Sequence	Mouse (58); Rat (58)
Preparation Method	in vitro wheat germ expression system
Purification	Glutathione Sepharose 4 Fast Flow
Quality Control Testing	12.5% SDS-PAGE Stained with Coomassie Blue.
Storage Buffer	50 mM Tris-HCl, 10 mM reduced Glutathione, pH=8.0 in the elution buffer.
Storage Instruction	Store at -80°C. Aliquot to avoid repeated freezing and thawing.
Note	Best use within three months from the date of receipt of this protein.

Applications

- Enzyme-linked Immunoabsorbent Assay
- Western Blot (Recombinant protein)
- Antibody Production
- Protein Array

Gene Info — ADAM30

Entrez GeneID [11085](#)

GeneBank Accession# [NM_021794](#)

Protein Accession# [NP_068566](#)

Gene Name ADAM30

Gene Alias svph4

Gene Description ADAM metallopeptidase domain 30

Omim ID [604779](#)

Gene Ontology [Hyperlink](#)

Gene Summary This gene encodes a member of the ADAM (a disintegrin and metalloprotease domain) family. Members of this family are membrane-anchored proteins structurally related to snake venom disintegrins, and have been implicated in a variety of biological processes involving cell-cell and cell-matrix interactions, including fertilization, muscle development, and neurogenesis. This gene is testis-specific and contains a polymorphic region, resulting in isoforms with varying numbers of C-terminal repeats. [provided by RefSeq]

Other Designations OTTHUMP00000014034|a disintegrin and metalloproteinase domain 30

Disease

- [Diabetes Mellitus](#)
- [Genetic Predisposition to Disease](#)