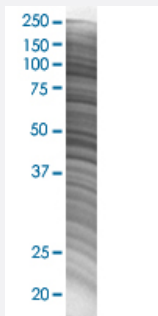


ESM1 293T Cell Transient Overexpression Lysate(Denatured)

Catalog # H00011082-T02

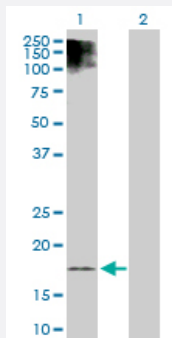
Size 100 uL

Applications



SDS-PAGE Gel

ESM1 transfected lysate.



Western Blot

Lane 1: ESM1 transfected lysate (20.10 KDa)

Lane 2: Non-transfected lysate.

Specification

| | |
|-------------------------------|-----------------------|
| Transfected Cell Line | 293T |
| Plasmid | pCMV-ESM1 full-length |
| Host | Human |
| Theoretical MW (kDa) | 20.1 |
| Interspecies Antigen Sequence | Mouse (74); Rat (74) |

Quality Control Testing

Transient overexpression cell lysate was tested with Anti-ESM1 antibody ([H00011082-D01P](#)) by Western Blots.
SDS-PAGE Gel
ESM1 transfected lysate.
Western Blot
Lane 1: ESM1 transfected lysate (20.10 KDa)
Lane 2: Non-transfected lysate.

Storage Buffer

1X Sample Buffer (50 mM Tris-HCl, 2% SDS, 10% glycerol, 300 mM 2-mercaptoethanol, 0.01% Bromophenol blue)

Storage Instruction

Store at -80°C. Aliquot to avoid repeated freezing and thawing.

Applications

- Western Blot

Gene Info — ESM1

Entrez GeneID[11082](#)**GeneBank Accession#**[NM_007036.3](#)**Protein Accession#**[NP_008967.1](#)**Gene Name**

ESM1

Gene Alias

endocan

Gene Description

endothelial cell-specific molecule 1

Omim ID[601521](#)**Gene Ontology**[Hyperlink](#)**Gene Summary**

This gene encodes a secreted protein which is mainly expressed in the endothelial cells in human lung and kidney tissues. The expression of this gene is regulated by cytokines, suggesting that it may play a role in endothelium-dependent pathological disorders. The transcript contains multiple polyadenylation and mRNA instability signals. Two transcript variants encoding different isoforms have been found for this gene. [provided by RefSeq]

Other Designations

OTTHUMP00000122501

Disease

- [Tobacco Use Disorder](#)