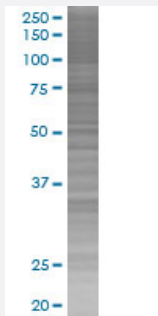


# ESM1 293T Cell Transient Overexpression Lysate(Denatured)

Catalog # H00011082-T01

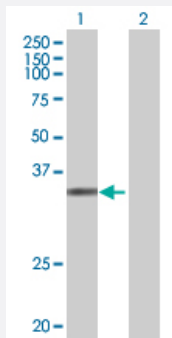
Size 100 uL

## Applications



### SDS-PAGE Gel

ESM1 transfected lysate.



### Western Blot

Lane 1: ESM1 transfected lysate ( 20.35 KDa)

Lane 2: Non-transfected lysate.

## Specification

Transfected Cell Line	293T
Plasmid	pCMV-ESM1 full-length
Host	Human
Theoretical MW (kDa)	20.35
Interspecies Antigen Sequence	Mouse (74); Rat (74)

## Quality Control Testing

Transient overexpression cell lysate was tested with Anti-ESM1 antibody ([H00011082-B01](#)) by Western Blots.  
SDS-PAGE Gel  
ESM1 transfected lysate.  
Western Blot  
Lane 1: ESM1 transfected lysate ( 20.35 KDa)  
Lane 2: Non-transfected lysate.

## Storage Buffer

1X Sample Buffer (50 mM Tris-HCl, 2% SDS, 10% glycerol, 300 mM 2-mercaptoethanol, 0.01% Bromophenol blue)

## Storage Instruction

Store at -80°C. Aliquot to avoid repeated freezing and thawing.

## Applications

- Western Blot

## Gene Info — ESM1

## Entrez GeneID

[11082](#)

## GeneBank Accession#

[NM\\_007036.3](#)

## Protein Accession#

-

## Gene Name

ESM1

## Gene Alias

endocan

## Gene Description

endothelial cell-specific molecule 1

## Omim ID

[601521](#)

## Gene Ontology

[Hyperlink](#)

## Gene Summary

This gene encodes a secreted protein which is mainly expressed in the endothelial cells in human lung and kidney tissues. The expression of this gene is regulated by cytokines, suggesting that it may play a role in endothelium-dependent pathological disorders. The transcript contains multiple polyadenylation and mRNA instability signals. Two transcript variants encoding different isoforms have been found for this gene. [provided by RefSeq]

## Other Designations

OTTHUMP00000122501

## Disease

- [Tobacco Use Disorder](#)