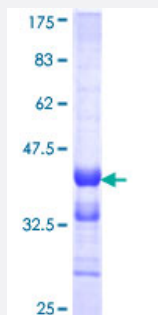


ESM1 (Human) Recombinant Protein (Q01)

Catalog # H00011082-Q01

Size 25 ug, 10 ug

Applications



Specification

Product Description	Human ESM1 partial ORF (NP_008967, 85 a.a. - 184 a.a.) recombinant protein with GST-tag at N-terminal.
Sequence	PSNGEDPFGEEFGICKDCPYGTFGMDCRETCNCQSGICDRGTGKCLKFPFFQYSVTKSSNRFVSLTEHDMASGDGNVREEVVKENAAGSPVMRKWLNPR
Host	Wheat Germ (in vitro)
Theoretical MW (kDa)	36.74
Interspecies Antigen Sequence	Mouse (74); Rat (74)
Preparation Method	in vitro wheat germ expression system
Purification	Glutathione Sepharose 4 Fast Flow
Quality Control Testing	12.5% SDS-PAGE Stained with Coomassie Blue.
Storage Buffer	50 mM Tris-HCl, 10 mM reduced Glutathione, pH=8.0 in the elution buffer.
Storage Instruction	Store at -80°C. Aliquot to avoid repeated freezing and thawing.
Note	Best use within three months from the date of receipt of this protein.

Applications

- Enzyme-linked Immunoabsorbent Assay
- Western Blot (Recombinant protein)
- Antibody Production
- Protein Array

Gene Info — ESM1

Entrez GeneID [11082](#)

GeneBank Accession# [NM_007036](#)

Protein Accession# [NP_008967](#)

Gene Name ESM1

Gene Alias endocan

Gene Description endothelial cell-specific molecule 1

Omim ID [601521](#)

Gene Ontology [Hyperlink](#)

Gene Summary This gene encodes a secreted protein which is mainly expressed in the endothelial cells in human lung and kidney tissues. The expression of this gene is regulated by cytokines, suggesting that it may play a role in endothelium-dependent pathological disorders. The transcript contains multiple polyadenylation and mRNA instability signals. Two transcript variants encoding different isoforms have been found for this gene. [provided by RefSeq]

Other Designations OTTHUMP00000122501

Disease

- [Tobacco Use Disorder](#)