

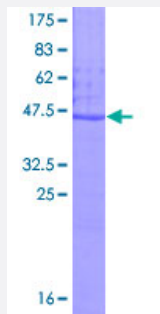
Full-Length

# ESM1 (Human) Recombinant Protein (P01)

Catalog # H00011082-P01

Size 10 ug, 25 ug

## Applications



## Specification

<b>Product Description</b>	Human ESM1 full-length ORF ( NP_008967.1, 1 a.a. - 184 a.a.) recombinant protein with GST-tag at N-terminal.
<b>Sequence</b>	MKSVLLLTLLVPAHLVAAWSNNYAVDCPQHCDSSSECKSSPRCKRTLDDCGCCRVCAAGRG ETCYRTVSGMDGMKCGPLRCQPSNGEDPFGEEFGICKDCPYGTFGMDCRETCNCQSGICDR GTGKCLKFPFFQYSVTKSSNRFVSLTEHDMASGDGNIVREEVVKENAAGSPVMRKWLNPR
<b>Host</b>	Wheat Germ (in vitro)
<b>Theoretical MW (kDa)</b>	46.5
<b>Interspecies Antigen Sequence</b>	Mouse (74); Rat (74)
<b>Preparation Method</b>	<a href="#">in vitro wheat germ expression system</a>
<b>Purification</b>	Glutathione Sepharose 4 Fast Flow
<b>Quality Control Testing</b>	12.5% SDS-PAGE Stained with Coomassie Blue.
<b>Storage Buffer</b>	50 mM Tris-HCl, 10 mM reduced Glutathione, pH=8.0 in the elution buffer.
<b>Storage Instruction</b>	Store at -80°C. Aliquot to avoid repeated freezing and thawing.

## Note

Best use within three months from the date of receipt of this protein.

## Applications

- Enzyme-linked Immunoabsorbent Assay
- Western Blot (Recombinant protein)
- Antibody Production
- Protein Array

## Gene Info — ESM1

Entrez GeneID [11082](#)

GeneBank Accession# [NM\\_007036.3](#)

Protein Accession# [NP\\_008967.1](#)

Gene Name ESM1

Gene Alias endocan

Gene Description endothelial cell-specific molecule 1

Omim ID [601521](#)

Gene Ontology [Hyperlink](#)

**Gene Summary** This gene encodes a secreted protein which is mainly expressed in the endothelial cells in human lung and kidney tissues. The expression of this gene is regulated by cytokines, suggesting that it may play a role in endothelium-dependent pathological disorders. The transcript contains multiple polyadenylation and mRNA instability signals. Two transcript variants encoding different isoforms have been found for this gene. [provided by RefSeq]

**Other Designations** OTTHUMP00000122501

## Disease

- [Tobacco Use Disorder](#)