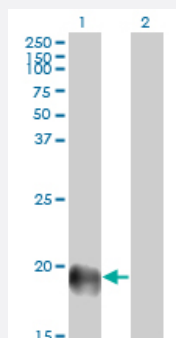


# ESM1 monoclonal antibody (M02), clone 6D4

Catalog # H00011082-M02

Size 100 ug

## Applications

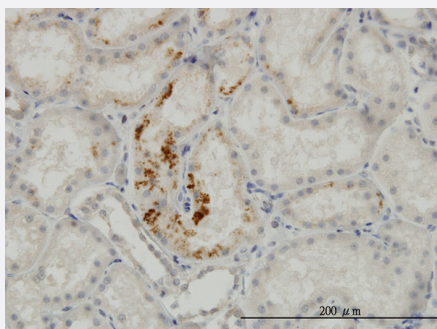


### Western Blot (Transfected lysate)

Western Blot analysis of ESM1 expression in transfected 293T cell line by ESM1 monoclonal antibody (M02), clone 6D4.

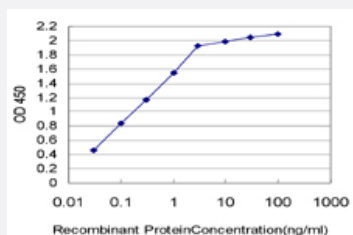
Lane 1: ESM1 transfected lysate(20.1 KDa).

Lane 2: Non-transfected lysate.



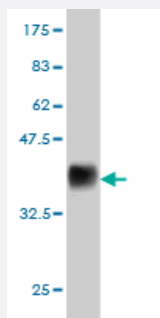
### Immunohistochemistry (Formalin/PFA-fixed paraffin-embedded sections)

Immunoperoxidase of monoclonal antibody to ESM1 on formalin-fixed paraffin-embedded human kidney. [antibody concentration 3 ug/ml]



### Sandwich ELISA (Recombinant protein)

Detection limit for recombinant GST tagged ESM1 is approximately 0.03ng/ml as a capture antibody.



Western Blot detection against Immunogen (36.74 KDa) .

## Specification

<b>Product Description</b>	Mouse monoclonal antibody raised against a partial recombinant ESM1.
<b>Immunogen</b>	ESM1 (NP_008967, 85 a.a. ~ 184 a.a) partial recombinant protein with GST tag. MW of the GST tag alone is 26 KDa.
<b>Sequence</b>	PSNGEDPFGEEFGICKDCPYGTFGMDCRETNCQSGICDRGTGKCLKFPFFQYSVTKSSNRFVSLTEHDMASGDGNIVREEVVKENAAGSPVMRKWLNPR
<b>Host</b>	Mouse
<b>Reactivity</b>	Human
<b>Interspecies Antigen Sequence</b>	Mouse (74); Rat (74)
<b>Isotype</b>	IgG2b Kappa
<b>Quality Control Testing</b>	Antibody Reactive Against Recombinant Protein. Western Blot detection against Immunogen (36.74 KDa) .
<b>Storage Buffer</b>	In 1x PBS, pH 7.4
<b>Storage Instruction</b>	Store at -20°C or lower. Aliquot to avoid repeated freezing and thawing.

## Applications

### ● Western Blot (Transfected lysate)

Western Blot analysis of ESM1 expression in transfected 293T cell line by ESM1 monoclonal antibody (M02), clone 6D4.

Lane 1: ESM1 transfected lysate(20.1 KDa).

Lane 2: Non-transfected lysate.

[Protocol Download](#)

- Western Blot (Recombinant protein)

[Protocol Download](#)

- Immunohistochemistry (Formalin/PFA-fixed paraffin-embedded sections)

Immunoperoxidase of monoclonal antibody to ESM1 on formalin-fixed paraffin-embedded human kidney. [antibody concentration 3 ug/ml]

[Protocol Download](#)

- Sandwich ELISA (Recombinant protein)

Detection limit for recombinant GST tagged ESM1 is approximately 0.03ng/ml as a capture antibody.

[Protocol Download](#)

- ELISA

## Gene Info — ESM1

Entrez GeneID [11082](#)

GeneBank Accession# [NM\\_007036](#)

Protein Accession# [NP\\_008967](#)

Gene Name ESM1

Gene Alias endocan

Gene Description endothelial cell-specific molecule 1

Omim ID [601521](#)

Gene Ontology [Hyperlink](#)

**Gene Summary** This gene encodes a secreted protein which is mainly expressed in the endothelial cells in human lung and kidney tissues. The expression of this gene is regulated by cytokines, suggesting that it may play a role in endothelium-dependent pathological disorders. The transcript contains multiple polyadenylation and mRNA instability signals. Two transcript variants encoding different isoforms have been found for this gene. [provided by RefSeq]

**Other Designations** OTTHUMP00000122501

## Publication Reference

- [Endocan Knockdown Down-Regulates the Expression of Angiogenesis-Associated Genes in IL-1 \$\beta\$  Activated Chondrocytes.](#)

Michele Scuruchi, Federica Aliquò, Angela Avenoso, Giuseppe Mandraffino, Giovanna Vermiglio, Aurelio Minuti, Salvatore Campo, Giuseppe Maurizio Campo, Angela D'Ascola.

Biomolecules 2023 May; 13(5):851.

Application: WB-Ce, Human, Human primary chondrocytes

- [Overexpression of Endothelial Cell-Specific Molecule 1 Correlates with Gleason Score and Expression of Androgen Receptor in Prostate Carcinoma.](#)

Lai CY, Chen CM, Hsu WH, Hsieh YH, Liu CJ.

International Journal of Medical Sciences 2017 Sep; 14(12):1263.

Application: IHC-P, Human, Human prostate carcinoma, Human prostate tissues

- [ESM-1 silencing decreased cell survival, migration, and invasion and modulated cell cycle progression in hepatocellular carcinoma.](#)

Kang YH, Ji NY, Lee CI, Lee HG, Kim JW, Yeom YI, Kim DG, Yoon SK, Kim JW, Park PJ, Song EY.

Amino Acids 2011 Mar; 40(3):1003.

Application: IF, IHC-Fr, Human, Human hepatocellular carcinoma

- [Identification of endothelial cell-specific molecule-1 as a potential serum marker for colorectal cancer.](#)

Ji NY, Kim YH, Jang YJ, Kang YH, Lee CI, Kim JW, Yeom YI, Chun HK, Choi YH, Kim JH, Kim JW, Lee HG, Song EY.

Cancer Science 2010 Oct; 101(10):2248.

Application: IHC-P, Human, Human colorectal cancer

- [Overexpression of Endothelial Cell Specific Molecule-1 \(ESM-1\) in Gastric Cancer.](#)

Liu N, Zhang LH, Du H, Hu Y, Zhang GG, Wang XH, Li JY, Ji JF.

Annals of Surgical Oncology 2010 Oct; 17(10):2628.

Application: IHC-P, Human, Human gastric cancer

## Disease

- [Tobacco Use Disorder](#)