

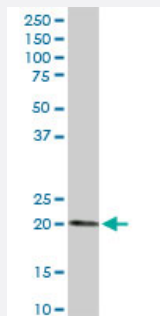
MaxPab®

ESM1 purified MaxPab rabbit polyclonal antibody (D01P)

Catalog # H00011082-D01P

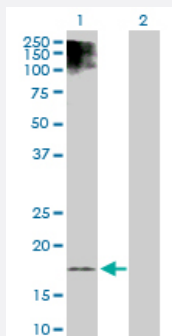
Size 100 ug

Applications



Western Blot (Tissue lysate)

ESM1 MaxPab rabbit polyclonal antibody. Western Blot analysis of ESM1 expression in human kidney.



Western Blot (Transfected lysate)

Western Blot analysis of ESM1 expression in transfected 293T cell line ([H00011082-T02](#)) by ESM1 MaxPab polyclonal antibody.

Lane 1: ESM1 transfected lysate(20.10 KDa).

Lane 2: Non-transfected lysate.

Specification

Product Description	Rabbit polyclonal antibody raised against a full-length human ESM1 protein.
Immunogen	ESM1 (NP_008967.1, 1 a.a. ~ 184 a.a) full-length human protein.
Sequence	MKSVLLLTLLVPAHLVAAWSNNYAVDCPQHCDSSSECKSSPRCKRTVLDDCGCCRVCAAGRG ETCYRTVSGMDGMKCGPGLRCQPSNGEDPFGEEFGICKDCPYGTFGMDCRETCNCQSGICDR GTGKCLKFPFFQYSVTKSSNRFVSLTEHDMASGDGNIVREEVVKENAAGSPVMRKWLNPR
Host	Rabbit
Reactivity	Human

Interspecies Antigen Sequence	Mouse (74); Rat (74)
Quality Control Testing	Antibody reactive against mammalian transfected lysate.
Storage Buffer	In 1x PBS, pH 7.4
Storage Instruction	Store at -20°C or lower. Aliquot to avoid repeated freezing and thawing.

Applications

- Western Blot (Tissue lysate)

ESM1 MaxPab rabbit polyclonal antibody. Western Blot analysis of ESM1 expression in human kidney.

[Protocol Download](#)

- Western Blot (Transfected lysate)

Western Blot analysis of ESM1 expression in transfected 293T cell line ([H00011082-T02](#)) by ESM1 MaxPab polyclonal antibody.

Lane 1: ESM1 transfected lysate(20.10 KDa).

Lane 2: Non-transfected lysate.

[Protocol Download](#)

Gene Info — ESM1

Entrez GeneID	11082
GeneBank Accession#	NM_007036.3
Protein Accession#	NP_008967.1
Gene Name	ESM1
Gene Alias	endocan
Gene Description	endothelial cell-specific molecule 1
Omim ID	601521
Gene Ontology	Hyperlink

Gene Summary

This gene encodes a secreted protein which is mainly expressed in the endothelial cells in human lung and kidney tissues. The expression of this gene is regulated by cytokines, suggesting that it may play a role in endothelium-dependent pathological disorders. The transcript contains multiple polyadenylation and mRNA instability signals. Two transcript variants encoding different isoforms have been found for this gene. [provided by RefSeq]

Other Designations

OTTHUMP00000122501

Disease

- [Tobacco Use Disorder](#)