

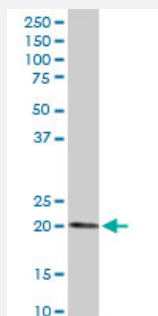
MaxPab®

ESM1 MaxPab rabbit polyclonal antibody (D01)

Catalog # H00011082-D01

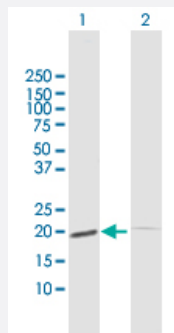
Size 100 uL

Applications



Western Blot (Tissue lysate)

ESM1 MaxPab rabbit polyclonal antibody. Western Blot analysis of ESM1 expression in human kidney.

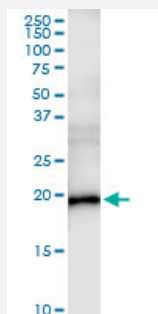


Western Blot (Transfected lysate)

Western Blot analysis of ESM1 expression in transfected 293T cell line ([H00011082-T02](#)) by ESM1 MaxPab polyclonal antibody.

Lane 1: ESM1 transfected lysate(20.1 KDa).

Lane 2: Non-transfected lysate.



Immunoprecipitation

Immunoprecipitation of ESM1 transfected lysate using anti-ESM1 MaxPab rabbit polyclonal antibody and Protein A Magnetic Bead, and immunoblotted with ESM1 MaxPab mouse polyclonal antibody (B01) ([H00011082-B01](#)).

Specification

Product Description

Rabbit polyclonal antibody raised against a full-length human ESM1 protein.

Immunogen	ESM1 (NP_008967.1, 1 a.a. ~ 184 a.a) full-length human protein.
Sequence	MKSVLLLTLLVPAHLVAAWSNNYAVDCPQHCDSSSECKSSPRCKRTVLDDCGCCRVCAAGRG ETCYRTVSGMDGMKCGPLRCQPSNGEDPFGEEFGICKDCPYGTFGMDCRETCNCQSGICDR GTGKCLKFPFFQYSVTKSSNRFVSLTEHDMASGDGNVREEVVKENAAGSPVMRKWLNPR
Host	Rabbit
Reactivity	Human
Interspecies Antigen Sequence	Mouse (74); Rat (74)
Quality Control Testing	Antibody reactive against mammalian transfected lysate.
Storage Buffer	No additive
Storage Instruction	Store at -20°C or lower. Aliquot to avoid repeated freezing and thawing.

Applications

- Western Blot (Tissue lysate)

ESM1 MaxPab rabbit polyclonal antibody. Western Blot analysis of ESM1 expression in human kidney.

[Protocol Download](#)

- Western Blot (Transfected lysate)

Western Blot analysis of ESM1 expression in transfected 293T cell line ([H00011082-T02](#)) by ESM1 MaxPab polyclonal antibody.

Lane 1: ESM1 transfected lysate(20.1 KDa).

Lane 2: Non-transfected lysate.

[Protocol Download](#)

- Immunoprecipitation

Immunoprecipitation of ESM1 transfected lysate using anti-ESM1 MaxPab rabbit polyclonal antibody and Protein A Magnetic Bead, and immunoblotted with ESM1 MaxPab mouse polyclonal antibody (B01) ([H00011082-B01](#)).

[Protocol Download](#)

Gene Info — ESM1

Entrez GeneID [11082](#)

GeneBank Accession#	NM_007036.3
Protein Accession#	NP_008967.1
Gene Name	ESM1
Gene Alias	endocan
Gene Description	endothelial cell-specific molecule 1
Omim ID	601521
Gene Ontology	Hyperlink
Gene Summary	This gene encodes a secreted protein which is mainly expressed in the endothelial cells in human lung and kidney tissues. The expression of this gene is regulated by cytokines, suggesting that it may play a role in endothelium-dependent pathological disorders. The transcript contains multiple polyadenylation and mRNA instability signals. Two transcript variants encoding different isoforms have been found for this gene. [provided by RefSeq]
Other Designations	OTTHUMP00000122501

Publication Reference

- [In-silico and in-vitro analysis of endocan interaction with statins.](#)

Kartik Kumar S, Muthusamy S, Kadirvel S, Priya Mani K.

International Journal of Biological Macromolecules 2020 Mar; 146:1087.

Application: WB-Ce, Human, EA. hy926 cells

Disease

- [Tobacco Use Disorder](#)