

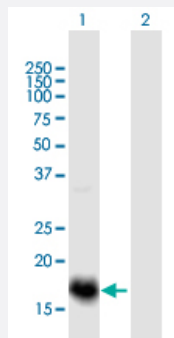
MaxPab®

ESM1 MaxPab mouse polyclonal antibody (B01)

Catalog # H00011082-B01

Size 50 uL

Applications



Western Blot (Transfected lysate)

Western Blot analysis of ESM1 expression in transfected 293T cell line ([H00011082-T01](#)) by ESM1 MaxPab polyclonal antibody.

Lane 1: ESM1 transfected lysate(20.24 KDa).

Lane 2: Non-transfected lysate.

Specification

Product Description	Mouse polyclonal antibody raised against a full-length human ESM1 protein.
Immunogen	ESM1 (NP_008967.1, 1 a.a. ~ 184 a.a) full-length human protein.
Sequence	MKSVLLLTLLVPAHLVAAWSNNYAVDCPQHCDSSSECKSSPRCKRTVLDDCGCCRVCAAGRG ETCYRTVSGMDGMKCGPLRCQPSNGEDPFGEEFGICKDCPYGTFGMDCRETCNCQSGICDR GTGKCLKFPFFQYSVTKSSNRFVSLTEHDMASGDGNVREEVVKENAAGSPVMRKWLNPR
Host	Mouse
Reactivity	Human
Interspecies Antigen Sequence	Mouse (74); Rat (74)
Quality Control Testing	Antibody reactive against mammalian transfected lysate.
Storage Buffer	No additive
Storage Instruction	Store at -20°C or lower. Aliquot to avoid repeated freezing and thawing.
Note	For IHC and IF applications, antibody purification with Protein A will be needed prior to use.

Applications

- Western Blot (Transfected lysate)

Western Blot analysis of ESM1 expression in transfected 293T cell line ([H00011082-T01](#)) by ESM1 MaxPab polyclonal antibody.

Lane 1: ESM1 transfected lysate(20.24 KDa).

Lane 2: Non-transfected lysate.

[Protocol Download](#)

Gene Info — ESM1

Entrez GeneID	11082
---------------	-----------------------

GeneBank Accession#	NM_007036.3
---------------------	-----------------------------

Protein Accession#	NP_008967.1
--------------------	-----------------------------

Gene Name	ESM1
-----------	------

Gene Alias	endocan
------------	---------

Gene Description	endothelial cell-specific molecule 1
------------------	--------------------------------------

Omim ID	601521
---------	------------------------

Gene Ontology	Hyperlink
---------------	---------------------------

Gene Summary	This gene encodes a secreted protein which is mainly expressed in the endothelial cells in human lung and kidney tissues. The expression of this gene is regulated by cytokines, suggesting that it may play a role in endothelium-dependent pathological disorders. The transcript contains multiple polyadenylation and mRNA instability signals. Two transcript variants encoding different isoforms have been found for this gene. [provided by RefSeq]
--------------	---

Other Designations	OTTHUMP00000122501
--------------------	--------------------

Disease

- [Tobacco Use Disorder](#)