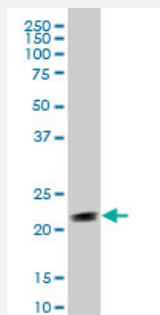


# STMN2 monoclonal antibody (M07), clone 2G7

Catalog # H00011075-M07

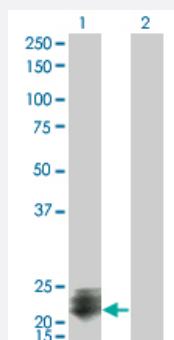
Size 100 ug

## Applications



### Western Blot (Cell lysate)

STMN2 monoclonal antibody (M07), clone 2G7 Western Blot analysis of STMN2 expression in IMR-32 ( Cat # L008V1 ).

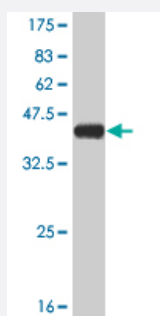


### Western Blot (Transfected lysate)

Western Blot analysis of STMN2 expression in transfected 293T cell line by STMN2 monoclonal antibody (M07), clone 2G7.

Lane 1: STMN2 transfected lysate(20.8 KDa).

Lane 2: Non-transfected lysate.



Western Blot detection against Immunogen (37.88 KDa) .

## Specification

### Product Description

Mouse monoclonal antibody raised against a full length recombinant STMN2.

Immunogen	STMN2 (NP_008960, 73 a.a. ~ 179 a.a) full length recombinant protein with GST tag. MW of the GST tag alone is 26 KDa.
Sequence	SPKKKDLLEEIQKKLEAAEERRKSQEAQVLKQLAEKREHEREVLQKALEENNNFSKMAEEKLILKMEQKENREANLAAIIERLQEKERHAAEVRRNKELQVELSG*
Host	Mouse
Reactivity	Human
Interspecies Antigen Sequence	Mouse (100); Rat (99)
Isotype	IgG2b Kappa
Quality Control Testing	Antibody Reactive Against Recombinant Protein. Western Blot detection against Immunogen (37.88 KDa) .
Storage Buffer	In 1x PBS, pH 7.4
Storage Instruction	Store at -20°C or lower. Aliquot to avoid repeated freezing and thawing.

## Applications

- Western Blot (Cell lysate)

STMN2 monoclonal antibody (M07), clone 2G7 Western Blot analysis of STMN2 expression in IMR-32 ( Cat # L008V1 ).

[Protocol Download](#)

- Western Blot (Transfected lysate)

Western Blot analysis of STMN2 expression in transfected 293T cell line by STMN2 monoclonal antibody (M07), clone 2G7.

Lane 1: STMN2 transfected lysate(20.8 KDa).

Lane 2: Non-transfected lysate.

[Protocol Download](#)

- Western Blot (Recombinant protein)

[Protocol Download](#)

- ELISA

## Gene Info — STMN2

Entrez GeneID	<a href="#">11075</a>
GeneBank Accession#	<a href="#">NM_007029</a>
Protein Accession#	<a href="#">NP_008960</a>
Gene Name	STMN2
Gene Alias	SCG10, SCGN10, SGC10
Gene Description	stathmin-like 2
Omim ID	<a href="#">600621</a>
Gene Ontology	<a href="#">Hyperlink</a>
Gene Summary	Superior cervical ganglion-10 is a neuronal growth-associated protein that shares significant amino acid sequence similarity with the phosphoprotein stathmin (MIM 151442).[supplied by OMIM]
Other Designations	neuronal growth-associated protein (silencer element) superior cervical ganglia, neural specific 10 superiorcervical ganglia, neural specific 10