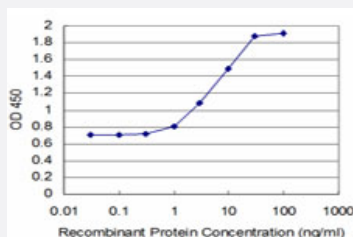


# STMN2 monoclonal antibody (M05), clone 1D3

Catalog # H00011075-M05

Size 100 ug

## Applications



### Sandwich ELISA (Recombinant protein)

Detection limit for recombinant GST tagged STMN2 is approximately 1ng/ml as a capture antibody.

## Specification

<b>Product Description</b>	Mouse monoclonal antibody raised against a partial recombinant STMN2.
<b>Immunogen</b>	STMN2 (NP_008960, 1 a.a. ~ 90 a.a) partial recombinant protein with GST tag. MW of the GST tag alone is 26 KDa.
<b>Sequence</b>	MAKTAMAYKEKMKELSMLESLICSCFYPEPRNINITYDDMEVKQINKRASGQAFELILKPPPISEA PRTLASPKKKDLSLEEIQKKLEA
<b>Host</b>	Mouse
<b>Reactivity</b>	Human
<b>Interspecies Antigen Sequence</b>	Mouse (100); Rat (99)
<b>Isotype</b>	IgG2b Kappa
<b>Quality Control Testing</b>	Antibody Reactive Against Recombinant Protein.
<b>Storage Buffer</b>	In 1x PBS, pH 7.4
<b>Storage Instruction</b>	Store at -20°C or lower. Aliquot to avoid repeated freezing and thawing.

## Applications

- Sandwich ELISA (Recombinant protein)

Detection limit for recombinant GST tagged STMN2 is approximately 1ng/ml as a capture antibody.

[Protocol Download](#)

- ELISA

## Gene Info — STMN2

Entrez GeneID	<a href="#">11075</a>
---------------	-----------------------

GeneBank Accession#	<a href="#">NM_007029</a>
---------------------	---------------------------

Protein Accession#	<a href="#">NP_008960</a>
--------------------	---------------------------

Gene Name	STMN2
-----------	-------

Gene Alias	SCG10, SCGN10, SGC10
------------	----------------------

Gene Description	stathmin-like 2
------------------	-----------------

Omim ID	<a href="#">600621</a>
---------	------------------------

Gene Ontology	<a href="#">Hyperlink</a>
---------------	---------------------------

Gene Summary	Superior cervical ganglion-10 is a neuronal growth-associated protein that shares significant amino acid sequence similarity with the phosphoprotein stathmin (MIM 151442).[supplied by OMIM]
--------------	---

Other Designations	neuronal growth-associated protein (silencer element) superior cervical ganglia, neural specific 10 superiorcervical ganglia, neural specific 10
--------------------	--