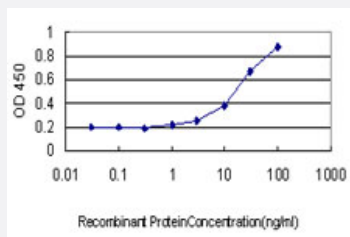


SOX30 monoclonal antibody (M01), clone 1A11

Catalog # H00011063-M01

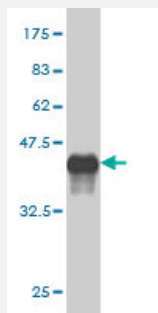
Size 100 ug

Applications



Sandwich ELISA (Recombinant protein)

Detection limit for recombinant GST tagged SOX30 is approximately 1 ng/ml as a capture antibody.



Western Blot detection against Immunogen (37.84 KDa) .

Specification

| | |
|----------------------------|--|
| Product Description | Mouse monoclonal antibody raised against a partial recombinant SOX30. |
| Immunogen | SOX30 (NP_848511, 644 a.a. ~ 753 a.a) partial recombinant protein with GST tag. MW of the GST tag alone is 26 KDa. |
| Sequence | SMPECLSYEDRYPKHEGIFSTLNRDYSFRDYSSECTHSENSRSCENMNGTSYNSHSHSGEENL NPVPQLDIGTLENVFTAPTSTPSSIQQVNVTDSEEEEEKVLRLD |
| Host | Mouse |
| Reactivity | Human |

| | |
|-------------------------------|--|
| Interspecies Antigen Sequence | Mouse (75) |
| Isotype | IgG2a Kappa |
| Quality Control Testing | Antibody Reactive Against Recombinant Protein. Western Blot detection against Immunogen (37.84 KDa) . |
| Storage Buffer | In 1x PBS, pH 7.4 |
| Storage Instruction | Store at -20°C or lower. Aliquot to avoid repeated freezing and thawing. |

Applications

- Western Blot (Recombinant protein)

[Protocol Download](#)

- Sandwich ELISA (Recombinant protein)

Detection limit for recombinant GST tagged SOX30 is approximately 1ng/ml as a capture antibody.

[Protocol Download](#)

- ELISA

Gene Info — SOX30

| | |
|---------------------|---------------------------------------|
| Entrez GeneID | 11063 |
| GeneBank Accession# | NM_178424 |
| Protein Accession# | NP_848511 |
| Gene Name | SOX30 |
| Gene Alias | - |
| Gene Description | SRY (sex determining region Y)-box 30 |
| Omim ID | 606698 |
| Gene Ontology | Hyperlink |

Gene Summary

This gene encodes a member of the SOX (SRY-related HMG-box) family of transcription factors involved in the regulation of embryonic development and in the determination of the cell fate. The encoded protein may act as a transcriptional regulator after forming a protein complex with other proteins. The protein may be involved in the differentiation of developing male germ cells. Two transcript variants encoding distinct isoforms have been identified for this gene. [provided by RefSeq]

Other Designations

Sox30 protein type II