

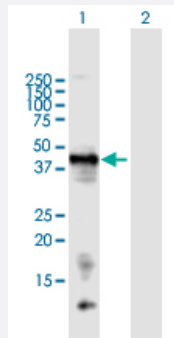
MaxPab®

LECT1 purified MaxPab mouse polyclonal antibody (B01P)

Catalog # H00011061-B01P

Size 50 ug

Applications



Western Blot (Transfected lysate)

Western Blot analysis of LECT1 expression in transfected 293T cell line ([H00011061-T01](#)) by LECT1 MaxPab polyclonal antibody.

Lane 1: LECT1 transfected lysate(36.74 KDa).

Lane 2: Non-transfected lysate.

Specification

Product Description	Mouse polyclonal antibody raised against a full-length human LECT1 protein.
Immunogen	LECT1 (NP_008946.1, 1 a.a. ~ 334 a.a) full-length human protein.
Sequence	MTENSDKVPIALVGPDDVEFCSPPAYATLTVKPSSPARLLKVGAVVLISGAVLLLFGAIGAFYFWK GSDSHYINVHYTMSINGKLQDGSMEIDAGNNLETFKMGSGAEEAIVNDFQNGITGIRFAGGEKCYI KAQVKARIPEVGAVTKQSISSKLEGKIMPVKYEENSLIWWAVDQPVKDNSFLSSKVLELCGDLPIF WLKPTYPKEIQRRERREVVRKIVPTTTTKRPHSGPRSNPGAGRLNNETRPSVQEDSQAFNPDNPYH QQEGESMTFDPRLDHEGICCECRSYTHCQKICEPLGGYYPWPYNYQGCRSACRVIMPCSWWV ARILGMV
Host	Mouse
Reactivity	Human
Interspecies Antigen Sequence	Mouse (88); Rat (88)
Quality Control Testing	Antibody reactive against mammalian transfected lysate.
Storage Buffer	In 1x PBS, pH 7.4

Storage Instruction

Store at -20°C or lower. Aliquot to avoid repeated freezing and thawing.

Applications

- Western Blot (Transfected lysate)

Western Blot analysis of LECT1 expression in transfected 293T cell line ([H00011061-T01](#)) by LECT1 MaxPab polyclonal antibody.

Lane 1: LECT1 transfected lysate(36.74 KDa).

Lane 2: Non-transfected lysate.

[Protocol Download](#)

Gene Info — LECT1

Entrez GeneID [11061](#)

GeneBank Accession# [NM_007015.2](#)

Protein Accession# [NP_008946.1](#)

Gene Name LECT1

Gene Alias BRICD3, CHM-I, CHM1

Gene Description leukocyte cell derived chemotaxin 1

Omim ID [605147](#)

Gene Ontology [Hyperlink](#)

Gene Summary

This gene encodes a glycosylated transmembrane protein that is cleaved to form a mature, secreted protein. The N-terminus of the precursor protein shares characteristics with other surfactant proteins and is sometimes called chondrosurfactant protein although no biological activity has yet been defined for it. The C-terminus of the precursor protein contains a 25 kDa mature protein called leukocyte cell-derived chemotaxin-1 or chondromodulin-1. The mature protein promotes chondrocyte growth and inhibits angiogenesis. This gene is expressed in the avascular zone of prehypertrophic cartilage and its expression decreases during chondrocyte hypertrophy and vascular invasion. The mature protein likely plays a role in endochondral bone development by permitting cartilaginous anlagen to be vascularized and replaced by bone. It may be involved also in the broad control of tissue vascularization during development. Alternative splicing results in multiple transcript variants encoding different isoforms. [provided by RefSeq]

Other Designations BRICHOS domain containing 3|OTTHUMP00000018466|chondromodulin I

Disease

- [Arthritis](#)
- [Disease Progression](#)
- [Osteoarthritis](#)