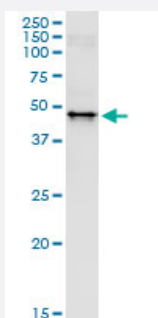


# WWP2 (Human) IP-WB Antibody Pair

Catalog # H00011060-PW2

Size 1 Set

## Applications



Immunoprecipitation of WWP2 transfected lysate using rabbit polyclonal anti-WWP2 and Protein A Magnetic Bead ([U0007](#)), and immunoblotted with mouse purified polyclonal anti-WWP2.

## Specification

<b>Product Description</b>	This IP-WB antibody pair set comes with one antibody for immunoprecipitation and another to detect the precipitated protein in western blot.
<b>Reactivity</b>	Human
<b>Interspecies Antigen Sequence</b>	Mouse (91); Rat (92)
<b>Quality Control Testing</b>	Immunoprecipitation-Western Blot (IP-WB) Immunoprecipitation of WWP2 transfected lysate using rabbit polyclonal anti-WWP2 and Protein A Magnetic Bead ( <a href="#">U0007</a> ), and immunoblotted with mouse purified polyclonal anti-WWP2.
<b>Supplied Product</b>	Antibody pair set content: 1. Antibody pair for IP: rabbit polyclonal anti-WWP2 (300 ul) 2. Antibody pair for WB: mouse purified polyclonal anti-WWP2 (50 ug)
<b>Storage Instruction</b>	Store reagents of the antibody pair set at -20°C or lower. Please aliquot to avoid repeated freeze thaw cycle. Reagents should be returned to -20°C storage immediately after use.

## Applications

- Immunoprecipitation-Western Blot

[Protocol Download](#)

## Gene Info — WWP2

**Entrez GeneID** [11060](#)

**Gene Name** WWP2

**Gene Alias** AIP2, WWp2-like

**Gene Description** WW domain containing E3 ubiquitin protein ligase 2

**Omim ID** [602308](#)

**Gene Ontology** [Hyperlink](#)

**Gene Summary** This gene encodes a member of the NEDD4-like protein family. The family of proteins is known to possess ubiquitin-protein ligase activity. The encoded protein contains 4 tandem WW domains. The WW domain is a protein motif consisting of 35 to 40 amino acids and is characterized by 4 conserved aromatic residues. The WW domain may mediate specific protein-protein interactions. Three alternatively spliced transcript variants encoding distinct isoforms have been found for this gene. [provided by RefSeq]

**Other Designations** Nedd-4-like ubiquitin-protein ligase|OTTHUMP00000174895|WW domain-containing protein 2|atrophin-1 interacting protein 2

## Pathway

- [Ubiquitin mediated proteolysis](#)

## Disease

- [Tobacco Use Disorder](#)