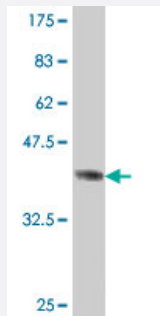


WWP2 polyclonal antibody (A01)

Catalog # H00011060-A01

Size 50 uL

Applications



Western Blot detection against Immunogen (38.21 KDa) .

Specification

Product Description	Mouse polyclonal antibody raised against a partial recombinant WWP2.
Immunogen	WWP2 (NP_008945, 1 a.a. ~ 110 a.a) partial recombinant protein with GST tag.
Sequence	MASASSSRAGVALPFEKSQLTLKVVSAPKPVHNRQPRINSYVEVAVDGLPSETKKTGKRIGSSEL LWNEIIILNVTQAQSHLDLKVWSCHTLRNELLGTASVNLNVLKNN
Host	Mouse
Reactivity	Human
Interspecies Antigen Sequence	Mouse (91); Rat (92)
Quality Control Testing	Antibody Reactive Against Recombinant Protein. Western Blot detection against Immunogen (38.21 KDa) .
Storage Buffer	50 % glycerol
Storage Instruction	Store at -20°C or lower. Aliquot to avoid repeated freezing and thawing.

Applications

- Western Blot (Recombinant protein)

[Protocol Download](#)

- ELISA

Gene Info — WWP2

Entrez GeneID [11060](#)

GeneBank Accession# [NM_007014](#)

Protein Accession# [NP_008945](#)

Gene Name WWP2

Gene Alias AIP2, WWp2-like

Gene Description WW domain containing E3 ubiquitin protein ligase 2

Omim ID [602308](#)

Gene Ontology [Hyperlink](#)

Gene Summary This gene encodes a member of the NEDD4-like protein family. The family of proteins is known to possess ubiquitin-protein ligase activity. The encoded protein contains 4 tandem WW domains. The WW domain is a protein motif consisting of 35 to 40 amino acids and is characterized by 4 conserved aromatic residues. The WW domain may mediate specific protein-protein interactions. Three alternatively spliced transcript variants encoding distinct isoforms have been found for this gene. [provided by RefSeq]

Other Designations Nedd-4-like ubiquitin-protein ligase|OTTHUMP00000174895|WW domain-containing protein 2|atrophin-1 interacting protein 2

Pathway

- [Ubiquitin mediated proteolysis](#)

Disease

- [Tobacco Use Disorder](#)