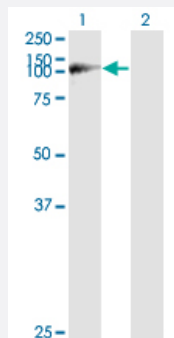


WWP1 monoclonal antibody (M01A), clone 1A7

Catalog # H00011059-M01A

Size 200 uL

Applications

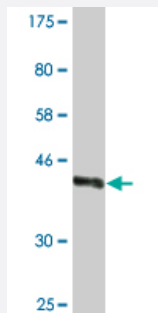


Western Blot (Transfected lysate)

Western Blot analysis of WWP1 expression in transfected 293T cell line by WWP1 monoclonal antibody (M01A), clone 1A7.

Lane 1: WWP1 transfected lysate (105.2 kDa).

Lane 2: Non-transfected lysate.



Western Blot detection against Immunogen (37.73 kDa) .

Specification

Product Description	Mouse monoclonal antibody raised against a partial recombinant WWP1.
Immunogen	WWP1 (NP_008944, 152 a.a. ~ 260 a.a) partial recombinant protein with GST tag. MW of the GST tag alone is 26 kDa.
Sequence	CSSSPTIEIQENGDALHENGEPsARTTARLAVEGTNGIDNHVPTSTLVQNSCCSYVVGNDNTPSS PSQVAARPKNTPAPKPLASEPADDTVNGESSSFAPTDNASVTGT
Host	Mouse
Reactivity	Human

Interspecies Antigen Sequence	Mouse (90); Rat (90)
Isotype	IgG2a Kappa
Quality Control Testing	Antibody Reactive Against Recombinant Protein. Western Blot detection against Immunogen (37.73 KDa) .
Storage Buffer	In ascites fluid
Storage Instruction	Store at -20°C or lower. Aliquot to avoid repeated freezing and thawing.

Applications

- Western Blot (Transfected lysate)

Western Blot analysis of WWP1 expression in transfected 293T cell line by WWP1 monoclonal antibody (M01A), clone 1A7.

Lane 1: WWP1 transfected lysate(105.2 KDa).

Lane 2: Non-transfected lysate.

[Protocol Download](#)

- Western Blot (Recombinant protein)

[Protocol Download](#)

- ELISA

Gene Info — WWP1

Entrez GeneID	11059
GeneBank Accession#	NM_007013
Protein Accession#	NP_008944
Gene Name	WWP1
Gene Alias	AIP5, DKFZp434D2111, Tiul1, hSDRP1
Gene Description	WW domain containing E3 ubiquitin protein ligase 1
Omim ID	602307
Gene Ontology	Hyperlink

Gene Summary

WW domain-containing proteins are found in all eukaryotes and play an important role in the regulation of a wide variety of cellular functions such as protein degradation, transcription, and RNA splicing. This gene encodes a protein which contains 4 tandem WW domains and a HECT (homologous to the E6-associated protein carboxyl terminus) domain. The encoded protein belongs to a family of NEDD4-like proteins, which are E3 ubiquitin-ligase molecules and regulate key trafficking decisions, including targeting of proteins to proteosomes or lysosomes. Alternative splicing of this gene generates at least 6 transcript variants; however, the full length nature of these transcripts has not been defined. [provided by RefSeq]

Other Designations

Nedd-4-like ubiquitin-protein ligase|TGIF-interacting ubiquitin ligase 1|atrophin-1 interacting protein 5

Publication Reference

- [Lysosomal trafficking of the glucose transporter GLUT1 requires sequential regulation by TXNIP and ubiquitin.](#)

Susan J Qualls-Histed, Casey P Nielsen, Jason A MacGurn.

iScience 2023 Feb; 26(3):106150.

Application: WB-Ce, Human, HeLa cells

- [The ubiquitin E3 ligase WWP1 increases CXCL12-mediated MDA231 breast cancer cell migration and bone metastasis.](#)

Subik K, Shu L, Wu C, Liang Q, Hicks D, Boyce B, Schiffhauer L, Chen D, Chen C, Tang P, Xing L.

Bone 2012 Jun; 50(4):813.

Application: IHC-P, Human, Thyroid adenoma, breast mucinous carcinoma, breast ductal carcinoma, MDA-MB-231

Pathway

- [Endocytosis](#)
- [Ubiquitin mediated proteolysis](#)