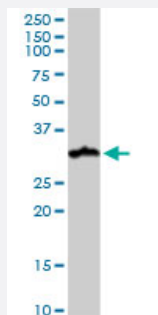


NUDT21 monoclonal antibody (M01), clone 2G4-6F11

Catalog # H00011051-M01

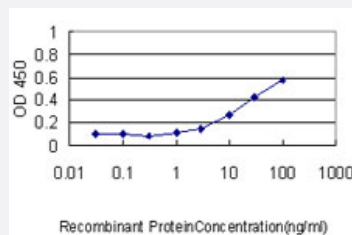
Size 50 ug

Applications



Western Blot (Tissue lysate)

NUDT21 monoclonal antibody (M01), clone 2G4-6F11. Western Blot analysis of NUDT21 expression in human kidney.



Sandwich ELISA (Recombinant protein)

Detection limit for recombinant GST tagged NUDT21 is approximately 1ng/ml as a capture antibody.

Specification

Product Description

Mouse monoclonal antibody raised against a full length recombinant NUDT21.

Immunogen

NUDT21 (AAH01403, 1 a.a. ~ 227 a.a) full-length recombinant protein with GST tag. MW of the GST tag alone is 26 KDa.

Sequence

MSVPPNRSQTGWPRGVTQFGNKYQQTKPLTLERTINLYPLTNYTFGTKEPLYEKDSSVAARFQR
MREEFDKIGMRRTVEGVLVHEHRLPHVLLLQLGTTFFKLPGGELNPGEDEVEGLKRLMTEILGRQ
DGLQDWVIDDCIGNWWRPNFEPQYPYIPAHITKPKEHKKLFLVQLQEALFAVPKNYKLVAAPL
FELYDNAPGYGPIISSLPQLLSRFNFYIN

Host

Mouse

Reactivity

Human

Interspecies Antigen Sequence	Mouse (99); Rat (99)
Isotype	IgG1 Kappa
Quality Control Testing	Antibody Reactive Against Recombinant Protein.
Storage Buffer	In 1x PBS, pH 7.4
Storage Instruction	Store at -20°C or lower. Aliquot to avoid repeated freezing and thawing.

Applications

- Western Blot (Tissue lysate)

NUDT21 monoclonal antibody (M01), clone 2G4-6F11. Western Blot analysis of NUDT21 expression in human kidney.

[Protocol Download](#)

- Sandwich ELISA (Recombinant protein)

Detection limit for recombinant GST tagged NUDT21 is approximately 1ng/ml as a capture antibody.

[Protocol Download](#)

- ELISA

Gene Info — NUDT21

Entrez GeneID	11051
GeneBank Accession#	BC001403
Protein Accession#	AAH01403
Gene Name	NUDT21
Gene Alias	CFIM25, CPSF5, DKFZp686H1588
Gene Description	nudix (nucleoside diphosphate linked moiety X)-type motif 21
Omim ID	604978
Gene Ontology	Hyperlink

Gene Summary

The protein encoded by this gene is one subunit of a cleavage factor required for 3' RNA cleavage and polyadenylation processing. The interaction of the protein with the RNA is one of the earliest steps in the assembly of the 3' end processing complex and facilitates the recruitment of other processing factors. This gene encodes the 25kD subunit of the protein complex, which is composed of four polypeptides. [provided by RefSeq]

Other Designations

cleavage and polyadenylation specific factor 5|cleavage and polyadenylation specific factor 5, 25 kD subunit|cleavage and polyadenylation specific factor 5, 25 kDa|pre-mRNA cleavage factor Im (25kD)|pre-mRNA cleavage factor Im, 25kD subunit