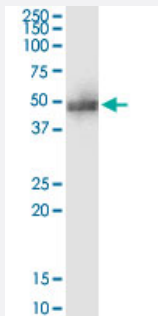


ADRM1 (Human) IP-WB Antibody Pair

Catalog # H00011047-PW1

Size 1 Set

Applications



Immunoprecipitation of ADRM1 transfected lysate using mouse monoclonal anti-ADRM1 and Protein A Magnetic Bead ([U0007](#)), and immunoblotted with mouse monoclonal anti-ADRM1.

Specification

Product Description	This IP-WB antibody pair set comes with one antibody for immunoprecipitation and another to detect the precipitated protein in western blot.
Reactivity	Human
Interspecies Antigen Sequence	Mouse (96); Rat (96)
Quality Control Testing	Immunoprecipitation-Western Blot (IP-WB) Immunoprecipitation of ADRM1 transfected lysate using mouse monoclonal anti-ADRM1 and Protein A Magnetic Bead (U0007), and immunoblotted with mouse monoclonal anti-ADRM1.
Supplied Product	Antibody pair set content: 1. Antibody pair for IP: mouse monoclonal anti-ADRM1 (300 ug) 2. Antibody pair for WB: mouse monoclonal anti-ADRM1 (50 ug)
Storage Instruction	Store reagents of the antibody pair set at -20°C or lower. Please aliquot to avoid repeated freeze thaw cycle. Reagents should be returned to -20°C storage immediately after use.

Applications

- Immunoprecipitation-Western Blot

[Protocol Download](#)

Gene Info — ADRM1

Entrez GeneID	11047
---------------	-----------------------

Gene Name	ADRM1
-----------	-------

Gene Alias	ARM1, GP110, MGC29536, Rpn13
------------	------------------------------

Gene Description	adhesion regulating molecule 1
------------------	--------------------------------

Omim ID	610650
---------	------------------------

Gene Ontology	Hyperlink
---------------	---------------------------

Gene Summary	The protein encoded by this gene is an integral plasma membrane protein which promotes cell adhesion. The encoded protein is thought to undergo O-linked glycosylation. Expression of this gene has been shown to be induced by gamma interferon in some cancer cells. Two transcript variants encoding the same protein have been found for this gene. [provided by RefSeq]
--------------	--

Other Designations	110 kDa cell membrane glycoprotein M(r) 110,000 surface antigen OTTHUMP00000031471 regulatory particle non-ATPase 13
--------------------	--