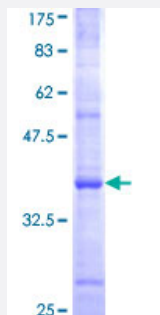


MID2 (Human) Recombinant Protein (Q01)

Catalog # H00011043-Q01

Size 25 ug, 10 ug

Applications



Specification

Product Description	Human MID2 partial ORF (NP_036348, 371 a.a. - 460 a.a.) recombinant protein with GST-tag at N-terminal.
Sequence	KLLEGLDYL TAPNPPSIREELCTASHDTITVHWISDDEFSSISSYELQYTIFTGQANFISKSWCSWGLWPEIRKCKEAVSCSRLAGAPRGL
Host	Wheat Germ (in vitro)
Theoretical MW (kDa)	35.64
Interspecies Antigen Sequence	Mouse (99); Rat (94)
Preparation Method	in vitro wheat germ expression system
Purification	Glutathione Sepharose 4 Fast Flow
Quality Control Testing	12.5% SDS-PAGE Stained with Coomassie Blue.
Storage Buffer	50 mM Tris-HCl, 10 mM reduced Glutathione, pH=8.0 in the elution buffer.
Storage Instruction	Store at -80°C. Aliquot to avoid repeated freezing and thawing.
Note	Best use within three months from the date of receipt of this protein.

Applications

- Enzyme-linked Immunoabsorbent Assay
- Western Blot (Recombinant protein)
- Antibody Production
- Protein Array

Gene Info — MID2

Entrez GeneID [11043](#)

GeneBank Accession# [NM_012216](#)

Protein Accession# [NP_036348](#)

Gene Name MID2

Gene Alias FXY2, MID1, RNF60, TRIM1

Gene Description midline 2

Omim ID [300204](#)

Gene Ontology [Hyperlink](#)

Gene Summary The protein encoded by this gene is a member of the tripartite motif (TRIM) family. The TRIM motif includes three zinc-binding domains, a RING, a B-box type 1 and a B-box type 2, and a coiled-coil region. The protein localizes to microtubular structures in the cytoplasm. Alternate splicing of this gene results in two transcript variants encoding different isoforms. [provided by RefSeq]

Other Designations OTTHUMP00000023817|dJ820B18.2 (midline 1 (Opitz/BBB syndrome))|midin 2|tripartite motif protein 1