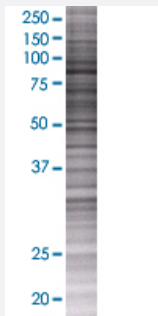


STON1 293T Cell Transient Overexpression Lysate(Denatured)

Catalog # H00011037-T01

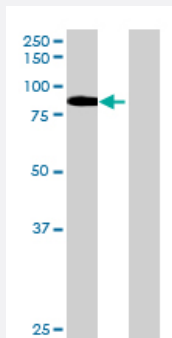
Size 100 uL

Applications



SDS-PAGE Gel

STON1 transfected lysate.



Western Blot

Lane 1: STON1 transfected lysate (80.96 KDa)

Lane 2: Non-transfected lysate.

Specification

Transfected Cell Line	293T
Plasmid	pCMV-STON1 full-length
Host	Human
Theoretical MW (kDa)	80.96
Interspecies Antigen Sequence	Mouse (76); Rat (76)

Quality Control Testing

Transient overexpression cell lysate was tested with Anti-STON1 antibody ([H00011037-B01](#)) by Western Blots.
 SDS-PAGE Gel
 STON1 transfected lysate.
 Western Blot
 Lane 1: STON1 transfected lysate (80.96 KDa)
 Lane 2: Non-transfected lysate.

Storage Buffer

1X Sample Buffer (50 mM Tris-HCl, 2% SDS, 10% glycerol, 300 mM 2-mercaptoethanol, 0.01% Bromophenol blue)

Storage Instruction

Store at -80°C. Aliquot to avoid repeated freezing and thawing.

Applications

- Western Blot

Gene Info — STON1

Entrez GeneID

[11037](#)

GeneBank Accession#

[NM_006873.2](#)

Protein Accession#

[NP_006864.2](#)

Gene Name

STON1

Gene Alias

DKFZp781K2462, MGC149803, MGC149804, SBLF, STN1, STNB1, stoned-b1

Gene Description

stonin 1

Omim ID

[605357](#)

Gene Ontology

[Hyperlink](#)

Gene Summary

Endocytosis of cell surface proteins is mediated by a complex molecular machinery that assembles on the inner surface of the plasma membrane. This gene encodes one of two human homologs of the *Drosophila melanogaster* stoned B protein. This protein is related to components of the endocytic machinery and exhibits a modular structure consisting of an N-terminal proline-rich domain, a central region of homology specific to the human stoned B-like proteins, and a C-terminal region homologous to the mu subunits of adaptor protein (AP) complexes. Co-transcription of this gene and the neighboring downstream gene generates a rare transcript (SALF), which encodes a fusion protein comprised of sequence sharing identity with each individual gene product. [provided by RefSeq]

Other Designations

stoned B homolog 1|stoned B-like factor

Pathway

- [Basal transcription factors](#)