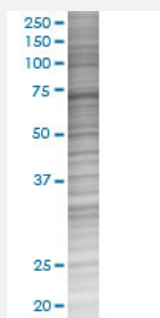


ALF 293T Cell Transient Overexpression Lysate(Denatured)

Catalog # H00011036-T01

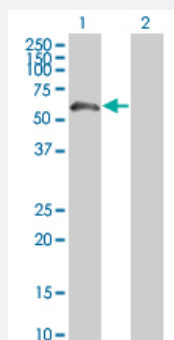
Size 100 uL

Applications



SDS-PAGE Gel

ALF transfected lysate.



Western Blot

Lane 1: ALF transfected lysate (52.69 KDa)

Lane 2: Non-transfected lysate.

Specification

Transfected Cell Line	293T
Plasmid	pCMV-ALF full-length
Host	Human
Theoretical MW (kDa)	52.69
Interspecies Antigen Sequence	Mouse (71); Rat (73)

Quality Control Testing

Transient overexpression cell lysate was tested with Anti-ALF antibody ([H00011036-B01](#)) by Western Blots.
 SDS-PAGE Gel
 ALF transfected lysate.
 Western Blot
 Lane 1: ALF transfected lysate (52.69 KDa)
 Lane 2: Non-transfected lysate.

Storage Buffer

1X Sample Buffer (50 mM Tris-HCl, 2% SDS, 10% glycerol, 300 mM 2-mercaptoethanol, 0.01% Bromophenol blue)

Storage Instruction

Store at -80°C. Aliquot to avoid repeated freezing and thawing.

Applications

- Western Blot

Gene Info — GTF2A1L

Entrez GeneID

[11036](#)

GeneBank Accession#

[NM_006872.2](#)

Protein Accession#

-

Gene Name

GTF2A1L

Gene Alias

ALF, MGC26254

Gene Description

general transcription factor IIA, 1-like

Omim ID

[605358](#)

Gene Ontology

[Hyperlink](#)

Gene Summary

The assembly and stability of the RNA polymerase II transcription pre-initiation complex on a eukaryotic core promoter involve the effects of TFIIA on the interaction between TATA-binding protein (TBP) and DNA. This gene encodes a germ cell-specific counterpart of the large (alpha/beta) subunit of general transcription factor TFIIA that is able to stabilize the binding of TBP to DNA and may be uniquely important to testis biology. Alternative splicing for this locus has been observed and two variants, encoding distinct isoforms, have been identified. Co-transcription of this gene and the neighboring upstream gene generates a rare transcript (SALF), which encodes a fusion protein comprised of sequence sharing identity with each individual gene product. [provided by RefSeq]

Other Designations

GTF2A1-like factor|TFIIA alpha/beta like factor|TFIIA large subunit isoform ALF|TFIIA-alpha/beta-like factor

Pathway

- [Basal transcription factors](#)

Disease

- [Tobacco Use Disorder](#)