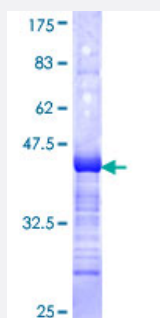


# ALF (Human) Recombinant Protein (Q01)

Catalog # H00011036-Q01

Size 25 ug, 10 ug

## Applications



## Specification

Product Description	Human ALF partial ORF ( NP_006863, 251 a.a. - 348 a.a.) recombinant protein with GST-tag at N-terminal.
Sequence	PQVSQTNSNVESVLSGSASMAQNLHDESLSTSPHGALHQHVTDIQLHILKNRMYGCDSVKQPRNI EEPSNIPVSEKDSNSQVDLSIRVTDDDIGEIIQ
Host	Wheat Germ (in vitro)
Theoretical MW (kDa)	36.52
Interspecies Antigen Sequence	Mouse (71); Rat (73)
Preparation Method	<a href="#">in vitro wheat germ expression system</a>
Purification	Glutathione Sepharose 4 Fast Flow
Quality Control Testing	12.5% SDS-PAGE Stained with Coomassie Blue.
Storage Buffer	50 mM Tris-HCl, 10 mM reduced Glutathione, pH=8.0 in the elution buffer.
Storage Instruction	Store at -80°C. Aliquot to avoid repeated freezing and thawing.
Note	Best use within three months from the date of receipt of this protein.

## Applications

- Enzyme-linked Immunoabsorbent Assay
- Western Blot (Recombinant protein)
- Antibody Production
- Protein Array

## Gene Info — GTF2A1L

Entrez GeneID [11036](#)

GeneBank Accession# [NM\\_006872](#)

Protein Accession# [NP\\_006863](#)

Gene Name GTF2A1L

Gene Alias ALF, MGC26254

Gene Description general transcription factor IIA, 1-like

Omim ID [605358](#)

Gene Ontology [Hyperlink](#)

**Gene Summary**

The assembly and stability of the RNA polymerase II transcription pre-initiation complex on a eukaryotic core promoter involve the effects of TFIIA on the interaction between TATA-binding protein (TBP) and DNA. This gene encodes a germ cell-specific counterpart of the large (alpha/beta) subunit of general transcription factor TFIIA that is able to stabilize the binding of TBP to DNA and may be uniquely important to testis biology. Alternative splicing for this locus has been observed and two variants, encoding distinct isoforms, have been identified. Co-transcription of this gene and the neighboring upstream gene generates a rare transcript (SALF), which encodes a fusion protein comprised of sequence sharing identity with each individual gene product. [provided by RefSeq

**Other Designations** GTF2A1-like factor|TFIIA alpha/beta like factor|TFIIA large subunit isoform ALF|TFIIA-alpha/beta-like factor

## Pathway

- [Basal transcription factors](#)

## Disease

- [Tobacco Use Disorder](#)