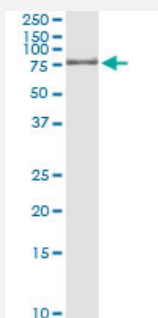


GTF2A1L (Human) IP-WB Antibody Pair

Catalog # H00011036-PW3

Size 1 Set

Applications



Immunoprecipitation of GTF2A1L transfected lysate using mouse monoclonal anti-GTF2A1L and Protein A Magnetic Bead ([U0007](#)), and immunoblotted with rabbit polyclonal anti-GTF2A1L.

Specification

Product Description	This IP-WB antibody pair set comes with one antibody for immunoprecipitation and another to detect the precipitated protein in western blot.
Reactivity	Human
Interspecies Antigen Sequence	Mouse (71); Rat (73)
Quality Control Testing	Immunoprecipitation-Western Blot (IP-WB) Immunoprecipitation of GTF2A1L transfected lysate using mouse monoclonal anti-GTF2A1L and Protein A Magnetic Bead (U0007), and immunoblotted with rabbit polyclonal anti-GTF2A1L.
Supplied Product	Antibody pair set content: 1. Antibody pair for IP: mouse monoclonal anti-GTF2A1L (300 ug) 2. Antibody pair for WB: rabbit polyclonal anti-GTF2A1L (50 ul)
Storage Instruction	Store reagents of the antibody pair set at -20°C or lower. Please aliquot to avoid repeated freeze thaw cycle. Reagents should be returned to -20°C storage immediately after use.

Applications

- Immunoprecipitation-Western Blot

[Protocol Download](#)

Gene Info — GTF2A1L

Entrez GeneID [11036](#)

Gene Name GTF2A1L

Gene Alias ALF, MGC26254

Gene Description general transcription factor IIA, 1-like

Omim ID [605358](#)

Gene Ontology [Hyperlink](#)

Gene Summary The assembly and stability of the RNA polymerase II transcription pre-initiation complex on a eukaryotic core promoter involve the effects of TFIIA on the interaction between TATA-binding protein (TBP) and DNA. This gene encodes a germ cell-specific counterpart of the large (alpha/beta) subunit of general transcription factor TFIIA that is able to stabilize the binding of TBP to DNA and may be uniquely important to testis biology. Alternative splicing for this locus has been observed and two variants, encoding distinct isoforms, have been identified. Co-transcription of this gene and the neighboring upstream gene generates a rare transcript (SALF), which encodes a fusion protein comprised of sequence sharing identity with each individual gene product. [provided by RefSeq]

Other Designations GTF2A1-like factor|TFIIA alpha/beta like factor|TFIIA large subunit isoform ALF|TFIIA-alpha/beta-like factor

Pathway

- [Basal transcription factors](#)

Disease

- [Tobacco Use Disorder](#)