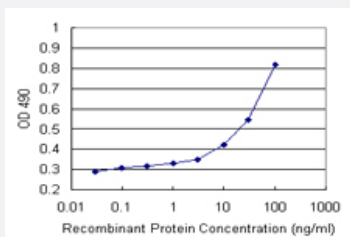


# GTF2A1L (Human) Matched Antibody Pair

Catalog # H00011036-AP22

Size 1 Set

## Applications



Sandwich ELISA detection sensitivity ranging from 10 ng/ml to 100 ng/ml.

## Specification

<b>Product Description</b>	This antibody pair set comes with a matched antibody pair to detect and quantify the protein level of human GTF2A1L.
<b>Reactivity</b>	Human
<b>Interspecies Antigen Sequence</b>	Mouse (71); Rat (73)
<b>Quality Control Testing</b>	Standard curve using recombinant protein ( H00011036-P01 ) as an analyte. Sandwich ELISA detection sensitivity ranging from 10 ng/ml to 100 ng/ml.
<b>Supplied Product</b>	Antibody pair set content: 1. Capture antibody: rabbit MaxPab® affinity purified polyclonal anti-GTF2A1L (100 ug) 2. Detection antibody: mouse purified polyclonal anti-GTF2A1L (20 ug) *Reagents are sufficient for at least 1-2 x 96 well plates using recommended protocols.
<b>Storage Instruction</b>	Store reagents of the antibody pair set at -20°C or lower. Please aliquot to avoid repeated freeze thaw cycle. Reagents should be returned to -20°C storage immediately after use.

## Applications

- ELISA Pair (Recombinant protein)

[Protocol Download](#)

## Gene Info — GTF2A1L

Entrez GeneID [11036](#)

Gene Name GTF2A1L

Gene Alias ALF, MGC26254

Gene Description general transcription factor IIA, 1-like

Omim ID [605358](#)

Gene Ontology [Hyperlink](#)

**Gene Summary**

The assembly and stability of the RNA polymerase II transcription pre-initiation complex on a eukaryotic core promoter involve the effects of TFIIA on the interaction between TATA-binding protein (TBP) and DNA. This gene encodes a germ cell-specific counterpart of the large (alpha/beta) subunit of general transcription factor TFIIA that is able to stabilize the binding of TBP to DNA and may be uniquely important to testis biology. Alternative splicing for this locus has been observed and two variants, encoding distinct isoforms, have been identified. Co-transcription of this gene and the neighboring upstream gene generates a rare transcript (SALF), which encodes a fusion protein comprised of sequence sharing identity with each individual gene product. [provided by RefSeq

**Other Designations**

GTF2A1-like factor|TFIIA alpha/beta like factor|TFIIA large subunit isoform ALF|TFIIA-alpha/beta-like factor

## Pathway

- [Basal transcription factors](#)

## Disease

- [Tobacco Use Disorder](#)