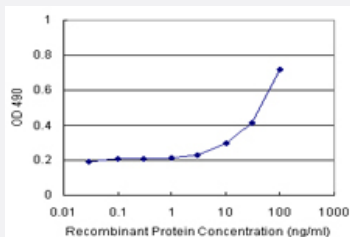


RAB31 (Human) Matched Antibody Pair

Catalog # H00011031-AP11

Size 1 Set

Applications



Sandwich ELISA detection sensitivity ranging from 10 ng/ml to 100 ng/ml.

Specification

Product Description	This antibody pair set comes with a matched antibody pair to detect and quantify the protein level of human RAB31.
Reactivity	Human
Interspecies Antigen Sequence	Mouse (94); Rat (94)
Quality Control Testing	Standard curve using recombinant protein (H00011031-P01) as an analyte. Sandwich ELISA detection sensitivity ranging from 10 ng/ml to 100 ng/ml.
Supplied Product	Antibody pair set content: 1. Capture antibody: rabbit MaxPab® affinity purified polyclonal anti-RAB31 (100 ug) 2. Detection antibody: mouse monoclonal anti-RAB31, IgG2a Kappa (20 ug) *Reagents are sufficient for at least 1-2 x 96 well plates using recommended protocols.
Storage Instruction	Store reagents of the antibody pair set at -20°C or lower. Please aliquot to avoid repeated freeze thaw cycle. Reagents should be returned to -20°C storage immediately after use.

Applications

- ELISA Pair (Recombinant protein)

[Protocol Download](#)

Gene Info — RAB31

Entrez GeneID [11031](#)

Gene Name RAB31

Gene Alias Rab22B

Gene Description RAB31, member RAS oncogene family

Omim ID [605694](#)

Gene Ontology [Hyperlink](#)

Gene Summary Small GTP-binding proteins of the RAB family, such as RAB31, play essential roles in vesicle and granule targeting (Bao et al., 2002 [PubMed 11784320]).[supplied by OMIM]

Other Designations -

Pathway

- [Endocytosis](#)

Disease

- [Tobacco Use Disorder](#)