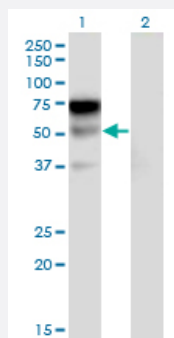


LILRA2 monoclonal antibody (M17), clone 3C7

Catalog # H00011027-M17

Size 100 ug

Applications

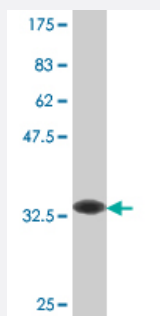


Western Blot (Transfected lysate)

Western Blot analysis of LILRA2 expression in transfected 293T cell line by LILRA2 monoclonal antibody (M17), clone 3C7.

Lane 1: LILRA2 transfected lysate (Predicted MW: 51.2 KDa).

Lane 2: Non-transfected lysate.



Western Blot detection against Immunogen (32.56 KDa) .

Specification

Product Description	Mouse monoclonal antibody raised against a partial recombinant LILRA2.
Immunogen	LILRA2 (NP_006857, 322 a.a. ~ 383 a.a) partial recombinant protein with GST tag. MW of the GST tag alone is 26 KDa.
Sequence	DRPSLSVQPVPTVAPGKNVTLLCQSRGQFHTFLLTKEGAGHPPLHLRSEHQAAQQNQAEFRMG
Host	Mouse
Reactivity	Human
Isotype	IgG2b Kappa

Quality Control Testing

Antibody Reactive Against Recombinant Protein.
Western Blot detection against Immunogen (32.56 KDa) .

Storage Buffer

In 1x PBS, pH 7.4

Storage Instruction

Store at -20°C or lower. Aliquot to avoid repeated freezing and thawing.

Applications

- Western Blot (Transfected lysate)

Western Blot analysis of LILRA2 expression in transfected 293T cell line by LILRA2 monoclonal antibody (M17), clone 3C7.

Lane 1: LILRA2 transfected lysate (Predicted MW: 51.2 KDa).

Lane 2: Non-transfected lysate.

[Protocol Download](#)

- Western Blot (Recombinant protein)

[Protocol Download](#)

- ELISA

Gene Info — LILRA2

Entrez GeneID

[11027](#)

GeneBank Accession#

[NM_006866](#)

Protein Accession#

[NP_006857](#)

Gene Name

LILRA2

Gene Alias

CD85H, ILT1, LIR-7, LIR7

Gene Description

leukocyte immunoglobulin-like receptor, subfamily A (with TM domain), member 2

Omim ID

[604812](#)

Gene Ontology

[Hyperlink](#)

Gene Summary

Leukocyte Ig-like receptors (LIRs) are a family of immunoreceptors expressed predominantly on monocytes and B cells and at lower levels on dendritic cells and natural killer (NK) cells. All LIRs in subfamily B have an inhibitory function (see, e.g., LILRB1, MIM 604811). LIRs in subfamily A, with short cytoplasmic domains lacking an immunoreceptor tyrosine-based inhibitory motif (ITIM) and with transmembrane regions containing a charged arginine residue, may initiate stimulatory cascades. One member of subfamily A (LILRA3; MIM 604818) lacks a transmembrane region and is presumed to be a soluble receptor.[supplied by OMIM]

Other Designations

leukocyte immunoglobulin-like receptor 7|leukocyte immunoglobulin-like receptor subfamily A member 2 soluble

Disease

- [Genetic Predisposition to Disease](#)
- [Hepatitis C](#)
- [Lupus Erythematosus](#)
- [Vasculitis](#)