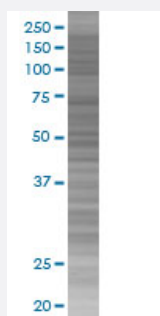


# TMED1 293T Cell Transient Overexpression Lysate(Denatured)

Catalog # H00011018-T01

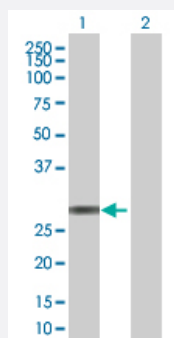
Size 100 uL

## Applications



### SDS-PAGE Gel

TMED1 transfected lysate.



### Western Blot

Lane 1: TMED1 transfected lysate ( 25.2 KDa)

Lane 2: Non-transfected lysate.

## Specification

**Transfected Cell Line** 293T

**Plasmid** pCMV-TMED1 full-length

**Host** Human

**Theoretical MW (kDa)** 25.2

### Quality Control Testing

Transient overexpression cell lysate was tested with Anti-TMED1 antibody ([H00011018-B01](#)) by Western Blots.

SDS-PAGE Gel

TMED1 transfected lysate.

Western Blot

Lane 1: TMED1 transfected lysate ( 25.2 KDa)

Lane 2: Non-transfected lysate.

Storage Buffer	1X Sample Buffer (50 mM Tris-HCl, 2% SDS, 10% glycerol, 300 mM 2-mercaptoethanol, 0.01% Bromophenol blue)
Storage Instruction	Store at -80°C. Aliquot to avoid repeated freezing and thawing.

## Applications

- Western Blot

## Gene Info — TMED1

Entrez GeneID	<a href="#">11018</a>
GeneBank Accession#	<a href="#">NM_006858.2</a>
Protein Accession#	-
Gene Name	TMED1
Gene Alias	IL1RL1LG, IL1RL1, MGC1270, ST2L
Gene Description	transmembrane emp24 protein transport domain containing 1
Omim ID	<a href="#">605395</a>
Gene Ontology	<a href="#">Hyperlink</a>
Gene Summary	The protein encoded by this gene was identified by its interaction with interleukin 1 receptor-like 1 (IL1RL1). This protein lacks any similarity to other interleukin 1 ligands. The functional significance of its interaction with IL1RL1 is not known. [provided by RefSeq]
Other Designations	IL1RL1-binding protein T1/ST2 receptor binding protein interleukin 1 receptor-like 1 ligand transmembrane emp24 domain containing 1